



**GLENMUIR**  
*1891*



Spring Summer 2012



# GLENMUIR 1891

Golf means everything to us

At the heart of the game of golf lies a Scottish brand name that is synonymous with quality in the golf and leisurewear market. Glenmuir has established a position as one of the most prestigious and successful golf and leisurewear brands in the world.

From Europe's Ryder Cup elite to club members, Glenmuir clothes golfers at all levels of the game. The company's passion for quality golf and leisurewear is as strong today as it was over a century ago in 1891 when it set up home in Lanark in the beautiful surroundings of the Scottish Clyde Valley. Golf is at the heart of our business... and means everything to us.



GLENMUIR  
*1891*





**Dublin** FSH6632  
Black/Iris and Rose/Black



**Monaco** FSH7134  
Iris/Winter White



**Etienne** FSH7135  
Black/Winter White/Iris/Rose



**Deauville** FSH7136  
Black/White



**Ralia** FSH7076  
Iris, Rose and Black



**Toulouse** FSH7138  
Iris/Winter White/Black



**Marseille** FSH7137  
Black/Iris/Winter White



**Ravelston** GSH7143  
Iris/Black/Rose/Winter White



**Jackson** GSH7109  
Iris/Black and Black/Winter White



**Eden** SIC6884VN  
Iris, Rose, Winter White and Black



**Melville** SIC7140VN  
Black/Iris/Winter White/Rose



**Woburn** SIC6961ZN  
Iris and Black



**Thornton** SIC7079S0  
Iris, Black and Winter White



**Shandwick** SIC7139S0  
Iris/Black and Black/Winter White



**Thames** SIL7121VN  
Iris/Black/Winter White



**Willoughby** GF7144  
Lead/Black/Garnet



**Storm Bloc® Team**  
GWS6968 Black/Graphite



**Storm Bloc® Club**  
GWS6972 Stone/Black



**Ossian** MG7128  
Black



**Delny** MT7107  
Black and Stone



**Stenton** MS7106  
Black and Stone



**Sophie** LSH2241  
Iris, Rose, Winter White and Black



**Mallow** LSH2242  
Rose



**Madeline** LSH2352  
White/Iris



**Holly** LSH6953  
Winter White/Rose and Iris/Winter White



**Allegra** LSH2427  
Winter White/Iris



**Collette** LSH2428  
Iris/Winter White



**Keira** LSH2432  
Rose/Winter White



**Tillie** LSH2429  
Winter White/Iris/Rose



**Tanya** LSH2430  
Rose/Winter White



**Serena** LSH2431  
Rose/Winter White



**Ailsa** BW2276S0  
Iris and Rose



**Erin** SIL2388VN  
Rose/Winter White/Iris



**Yasmin** SIL2387VN  
Iris, Rose, Winter White and Black



**Abigail** SIL2439S0  
Iris/Winter White/Rose



**Saskia** SIL2433ZN  
Iris/Winter White/Rose



**Marilyn** SIL2435ZC  
Rose/Winter White



**Orla** SIL2434ZC  
Winter White/Iris



**Maxine** SIL2436VN  
Winter White/Rose/Iris



**Beatrice** LF2438  
Rose



**Storm Bloc® Ace**  
LWS6980 Black/Graphite



**Stella** LT2390  
Winter White and Black



**Darvel** LC2291  
Iris and Black



**Tallulah** LS2437  
Winter White/Iris/Rose and  
Iris/Winter White/Rose



**Miranda** LS2391  
Black



GLENMUIR  
*1891*

Antigua



**Dublin** FSH6632  
Cobalt/White



**Monaco** FSH7134  
Navy/Lagoon and Cobalt/Navy



**Etienne** FSH7135  
Lagoon/White/Cobalt/Navy



**Deauville** FSH7136  
Cobalt/White



**Ralía** FSH7076  
Lagoon, Cobalt, White and Navy



**Toulouse** FSH7138  
Lagoon/Cobalt/White and Navy/Cobalt/White



**Marseille** FSH7137  
White/Cobalt/Navy and Navy/Cobalt/Lagoon



**Ambrose** GSH7086  
Cobalt/Navy/White



**Jackson** GSH7109  
White/Navy and Cobalt/White



**Dundas** GSH7142  
Lagoon/White



**Eden** SIC6884VN  
Lagoon and Cobalt



**Thornton** SIC7079SO  
Cobalt and Navy



**Woburn** SIC69612N  
Cobalt and Navy



**Shandwick** SIC7139SO  
Lagoon/White



**Melville** SIC7140VN  
Lagoon/Cobalt/White/Navy



**Thames** SIL7121VN  
Navy/Lagoon/Winter White



**Willoughby** GF7144  
Navy/Cobalt



**Storm Bloc® Team**  
GWS6968 Cobalt/Navy



**Storm Bloc® Club**  
GWS6972 Navy/Ink



**Ossian** MG7128  
Navy



**Struie** MT7108  
White and Navy



**Stenton** MS7106  
Navy



**Sophie** LSH2241  
Lagoon, Cobalt, White and Navy



**Mallow** LSH2242  
Lagoon and White



**Tess** LSH2412  
Lagoon and White



**Holly** LSH6953  
Lagoon/White



**Allegra** LSH2427  
Lagoon/White



**Collette** LSH2428  
White/Lagoon



**Keira** LSH2432  
Lagoon/White



**Tillie** LSH2429  
White/Lagoon/Navy



**Tanya** LSH2430  
Lagoon/White



**Serena** LSH2431  
Lagoon/White



**Ailsa** BW2276SO  
Lagoon and Dark Navy



**Paula** SIL2332ZN  
Lagoon and Navy



**Yasmin** SIL2387VN  
Lagoon, Cobalt, White and Navy



**Erin** SIL2388VN  
Lagoon/White/Cobalt



**Abigail** SIL2439SO  
White/Lagoon/Cobalt



**Saskia** SIL2433ZN  
White/Lagoon/Cobalt



**Orla** SIL2434ZC  
Lagoon/White



**Marilyn** SIL2435ZC  
Navy/Lagoon



**Maxine** SIL2436VN  
Lagoon/White/Cobalt



**Beatrice** LF2438  
Lagoon



**Storm Bloc® Ace**  
LWS6980 Lagoon/White



**Stella** LT2390  
Navy



**Darvel** LC2291  
White, Lagoon and Navy



**Tallulah** LS2437  
White/Lagoon/Navy and Lagoon/White/Cobalt



**Miranda** LS2391  
Navy and White



GLENMUIR  
1891

# Men's Collection

Spring Summer 2012

SEASONAL  
FURNISHES

**Etienne** fSH7135 S-XXL

Shown in Black/Winter White/Iris/Rose.

100% mercerised 2/70s combed cotton, multi colour stripe shirt with anti-curl rib collar. Under collar embroidery detail at centre back. 1891 woven tab on right sleeve hem.



Black  
Winter White  
Iris  
Rose

Lagoon  
White  
Cobalt  
Navy



**Dublin** FSH6632 S-XXL

Shown in Cobalt/White.

100% mercerised 2/70s combed cotton jersey polo with yarn-dyed feeder stripe. Cotton elastane anti-curl collar. 1891 woven tab on right sleeve cuff.



Rose Black    Black Iris    Cobalt White    Navy Cucumber    Tartan Green White



Starfish Bone    Navy White    Black Sand    Navy Ascot Blue    Stone Latte    Satellite Navy    Light Blue White    Hot Pink White    Mercury White    Khaki Winter White



1891  
GLENMUIR

**Howth** FSH6631 S-XXL

Shown in Iris.

100% mercerised 2/70s combed cotton jersey solid colour polo. Cotton elastane anti-curl collar. 1891 woven tab on right sleeve hem.



Rose    Iris    Lagoon    Cobalt    Starfish    Paradise



Light Yellow    White    Navy    Ascot Blue    Garnet    Stone    Light Blue    Hot Pink    Mercury    Black



**Deauville** FSH7136 S-XXL

SEASONAL PURCHASE

Shown in Black/White.

100% mercerised 2/70s combed cotton, piped detail shirt with rib collar. 1891 woven tab on right sleeve cuff. 1891 detail at centre back collar.



Black White Cobalt White

1891  
GLENMUIR



SEASONAL PURCHASE

**Monaco** FSH7134 S-XXL

Shown in Iris/Winter White

100% mercerised 2/70s combed cotton, two colour stripe shirt with anti-curl rib collar. Under collar embroidery detail at centre back. 1891 woven tab on right sleeve hem.



Iris Winter white Navy Lagoon Cobalt Navy



**Sotogrande** FSH7010 S-XXL

Shown in White/Black

100% mercerised combed cotton pique polo. Cotton elastane contrast birdseye collar and cuffs. 1891 woven tab on right sleeve cuff.



Iris Winter White Lagoon White White Black



Navy Stone Paradise Charcoal Mercury White





**Ralia FSH7076 S-XXL**



Shown in Starfish.

100% cotton honeycomb pique solid colour Euro Fit polo with Glenmuir 1891 embroidery on right sleeve. Colours co-ordinate with ladies' Sophie shirt. Junior sizes are available in selected colours - see page 98 for details.



Rose



Iris Lagoon Cobalt Starfish Cucumber



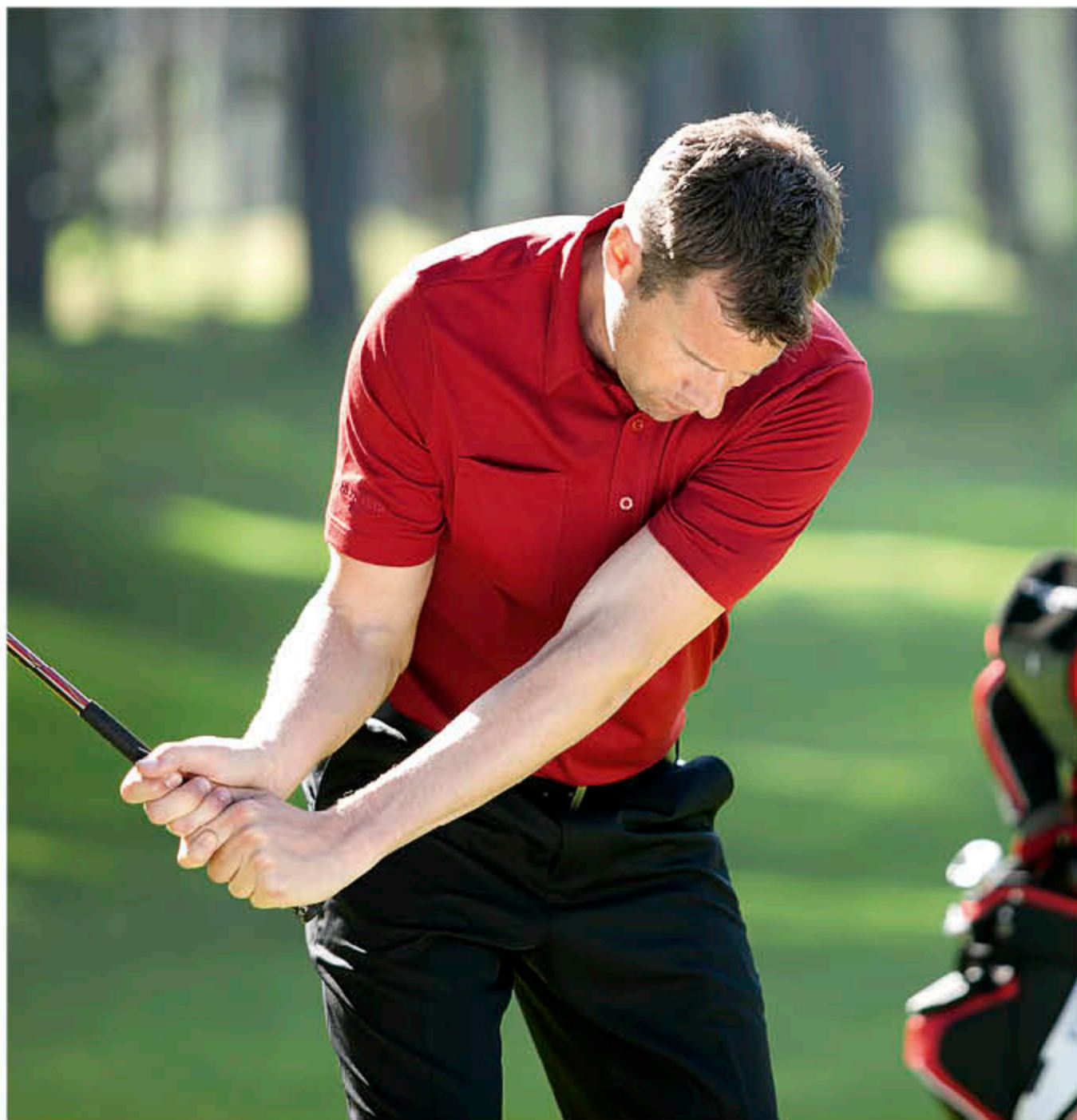
Berry Light Yellow Light Blue Ascot Blue Tartan Green



Garnet Pearl Grey Mango White Hot Pink



Navy Lead Black Burnished Kingfisher



**Moffat** GSH5395HK S-XXL easy care

Shown in Garnet.

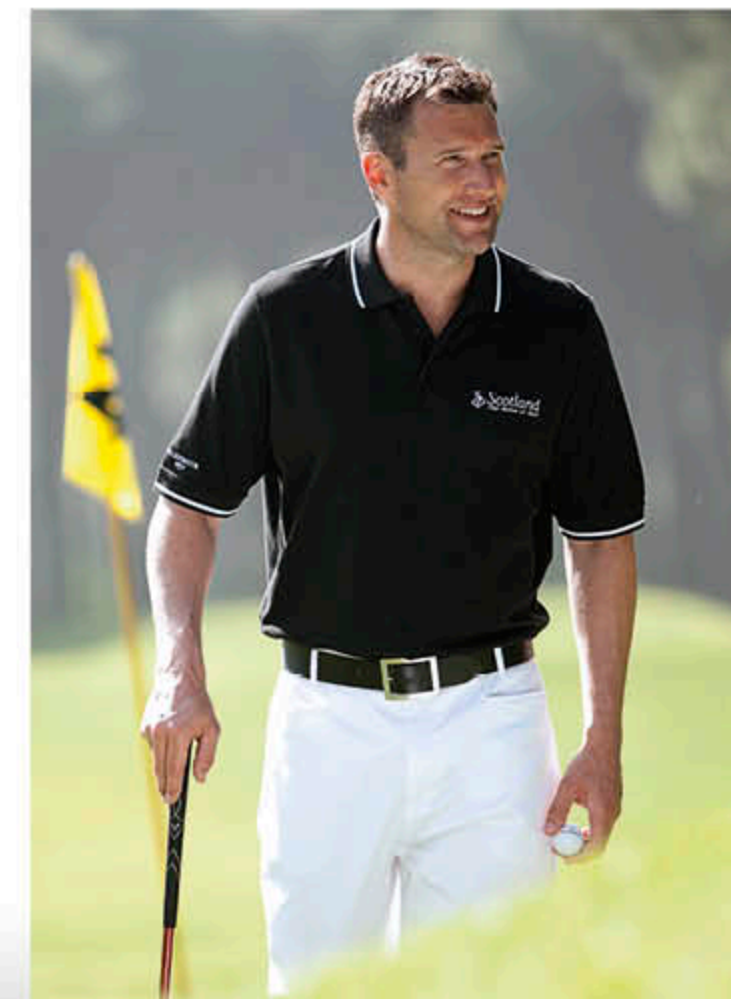
Easycare cotton polyester blend solid colour shirt. Anti-curl tailored collar with tag reinforcement. Right chest pocket. Glenmuir 1891 embroidery on right sleeve.



**Lonie** FSH6562 S-XXL

Shown in Black/White.

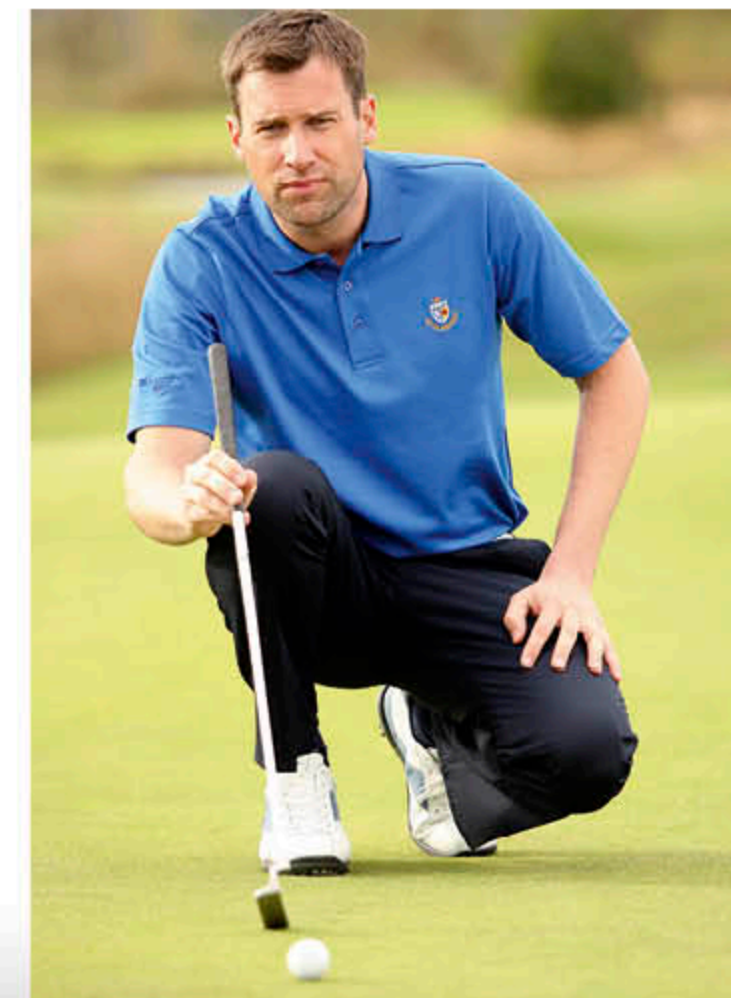
100% combed cotton lightweight baby pique solid colour polo. Contrast coloured collar and cuffs stripe. Glenmuir 1891 embroidery on right sleeve.



**Angus** GSH6048 S-XXL easy care

Shown in Ascot Blue.

Easycare cotton polyester blend solid colour polo. Glenmuir 1891 embroidery on right sleeve.






**Mull** PSH6000B S-XXL

Shown in White\*

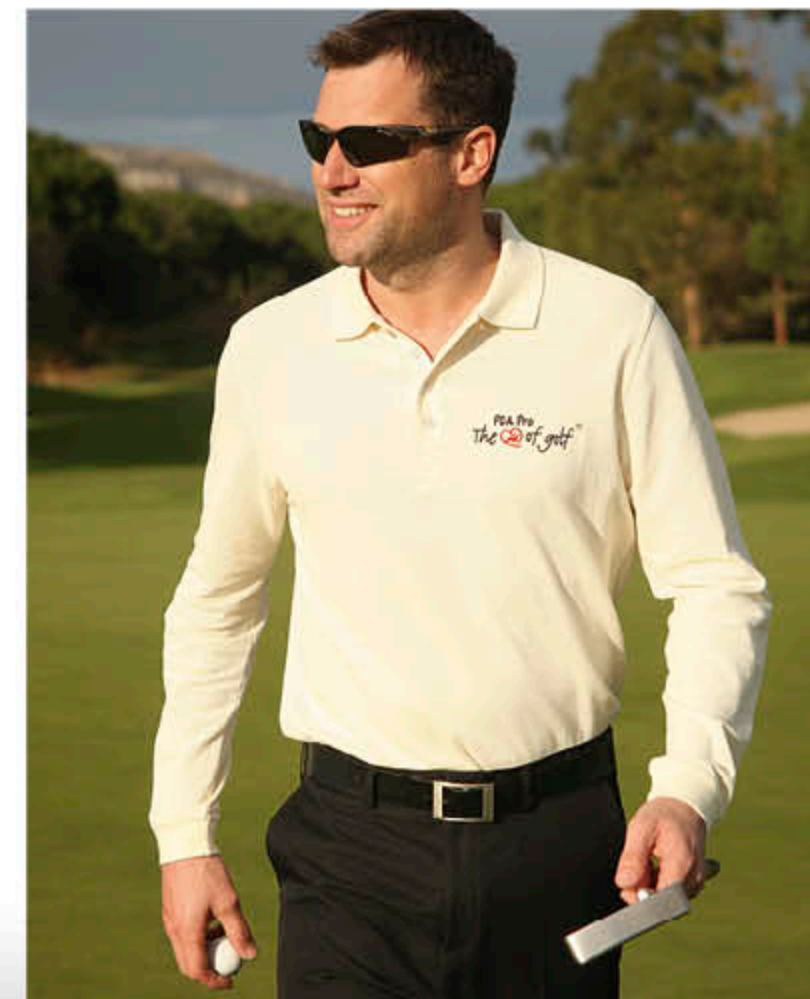
100% combed cotton pique solid colour polo. Glenmuir 1891 embroidery on right sleeve. Available in xs.\*



**Tyne** FSH7119 S-XXL 

Shown in Winter White.

100% cotton honeycomb pique, solid colour long sleeve Euro Fit polo with Glenmuir 1891 embroidery on right sleeve.

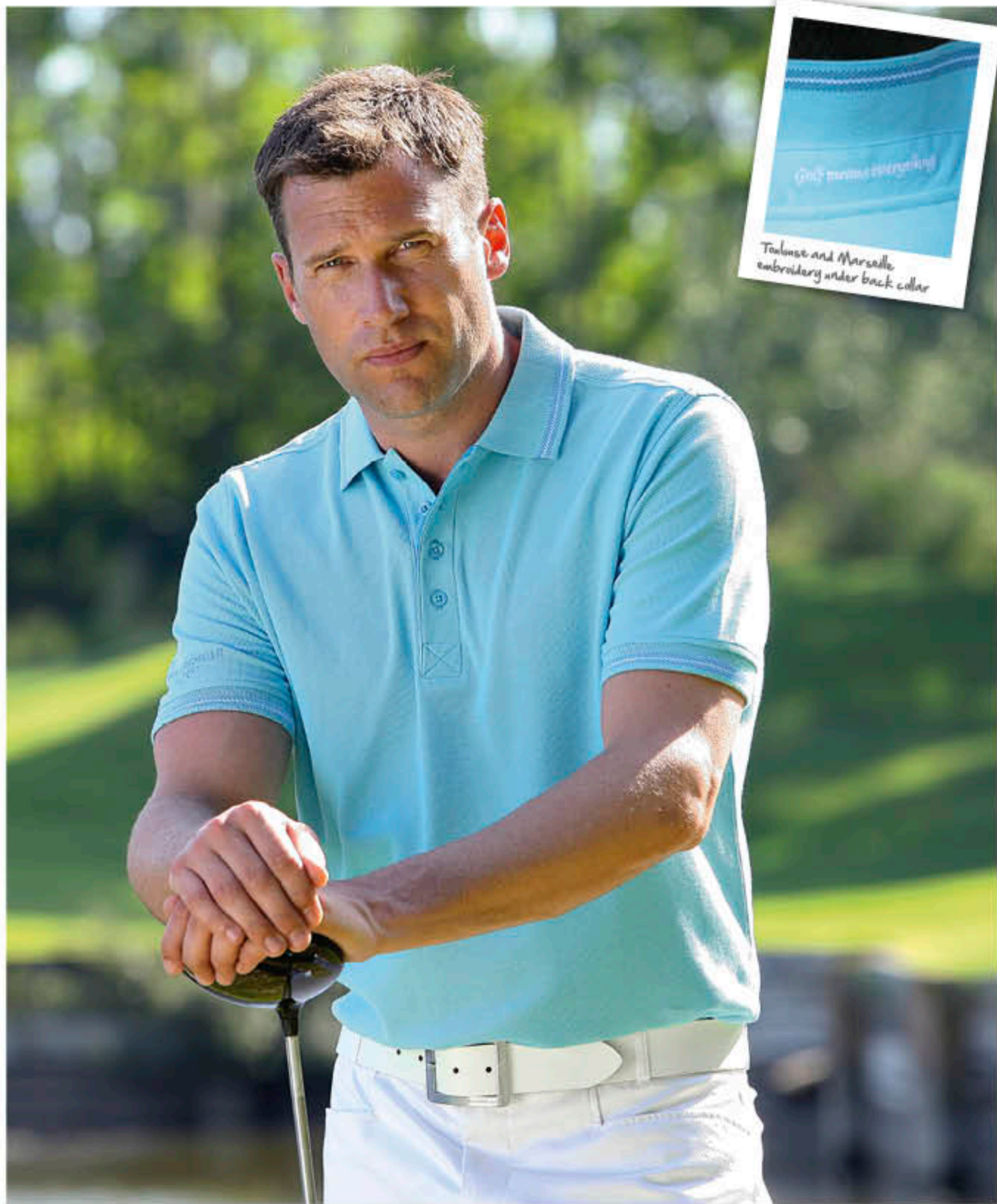


**Lewis** CPN6100A S-XXL

Shown in Grey Marl.

100% supersoft cotton jersey solid colour long sleeve shirt. Roll collar. Available in xs.\*





**Toulouse** FSH7138 S-XXL

SEASONAL PICKING 22

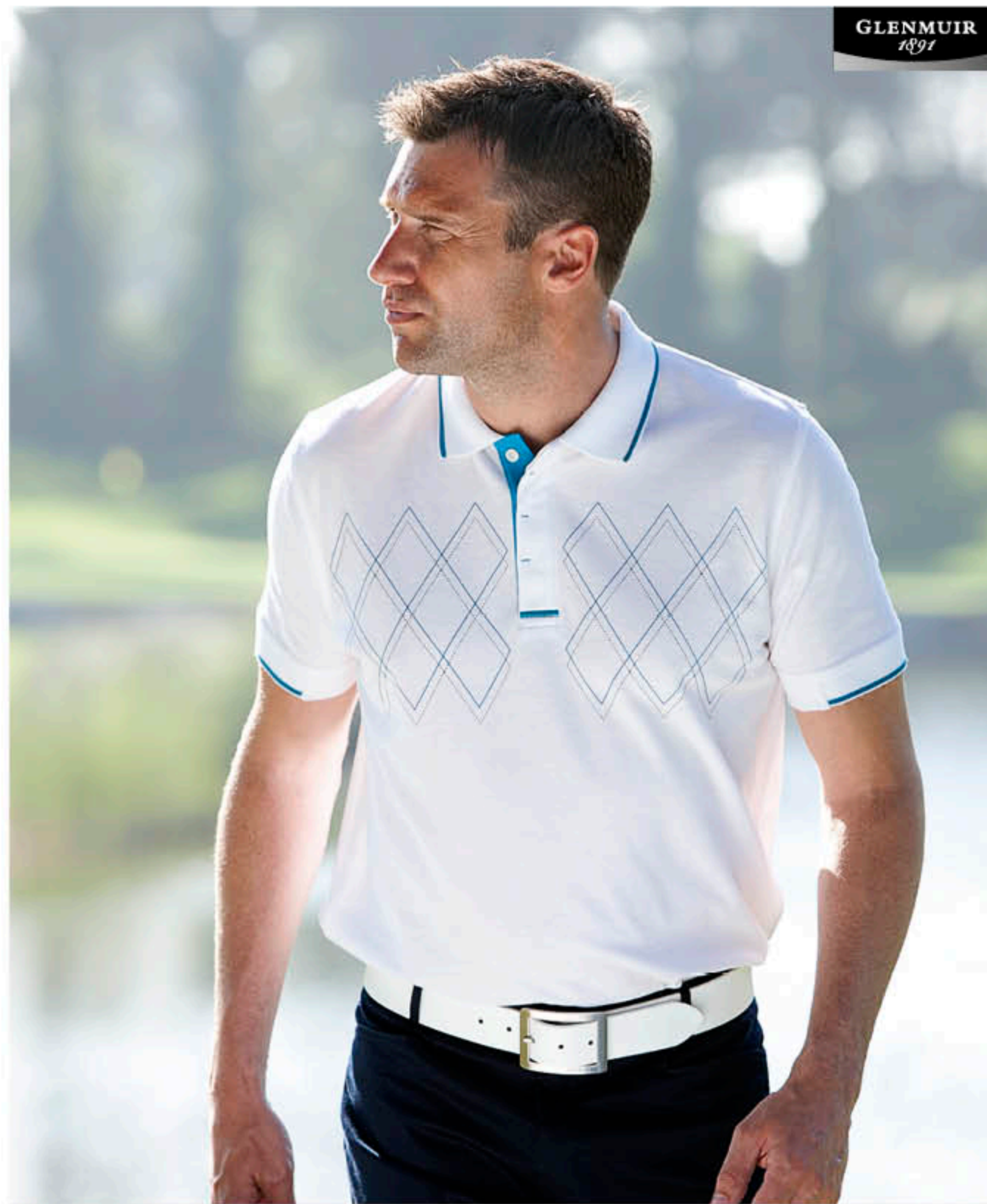
EURO FIT

Shown in Lagoon/Cobalt/White.

100% combed cotton pique Euro Fit shirt with tipping detail on collar and cuffs. Under collar embroidery detail at centre back - 'Golf Means Everything'. Glenmuir 1891 embroidery on right sleeve.



Iris Winter White Black  
Lagoon Cobalt White  
Navy Cobalt White  
Black Starfish White



**Marseille** FSH7137 S-XXL

SEASONAL PICKING 22

EURO FIT

Shown in White/Cobalt/Navy

100% combed cotton pique Euro Fit shirt with diamond print on front panel and tipping detail on collar and cuffs. Under collar embroidery detail at centre back - 'Golf Means Everything'. Glenmuir 1891 embroidery on right sleeve.



Black Iris Winter White  
White Cobalt Navy  
Navy Cobalt Lagoon



**Performance Club** GSH6893 S-XXL

Shown in Cobalt.

100% polyester performance polo with Coolmax® moisture management system and UV protection. Self colour textured stripe shirt. Glenmuir 1891 embroidery on right sleeve.

Coolmax®



**GLENMUIR**  
1891  
PERFORMANCE

**Dundas** GSH7142 S-XXL

Shown in White/Cobalt.

100% polyester performance Euro Fit polo with Thermocool™ comfort zone technology. Contrast inserts and piping on body and sleeves. Glenmuir 1891 print on right chest.



REASONAL PRICE TAGS



**Jackson** GSH7109 S-XXL

SEASONAL  
PERFORMANCE

Shown in Iris/Black.

100% polyester performance polo with Thermocool™ comfort zone technology. Zip neck polo with seam detail on body and sleeves highlighted with contrast piping. Glenmuir 1891 embroidery on right sleeve.



Iris  
Black

Cobalt  
White

Black  
Winter White

White  
Navy



**Ambrose** GSH7086 S-XXL

SEASONAL  
PERFORMANCE

Coolplus

Shown in Black/Winter White/Iris.

100% polyester performance polo with Coolplus® moisture management technology. Stripe design with texture detail. Glenmuir 1891 embroidery on right sleeve.



Black  
Winter White  
Iris

Cobalt  
Navy  
White

Navy  
Cucumber  
White



**Barnton** GSH7141 S-XXL **SEASONAL PICKINGS** **Hi Cool**

Shown in White/Navy.

Cotton polyester performance polo with Hi-Cool® moisture management system. Button placket with self fabric collar and contrast piping and flashes. Glenmuir 1891 print on right sleeve.



Black White Cobalt White White Navy



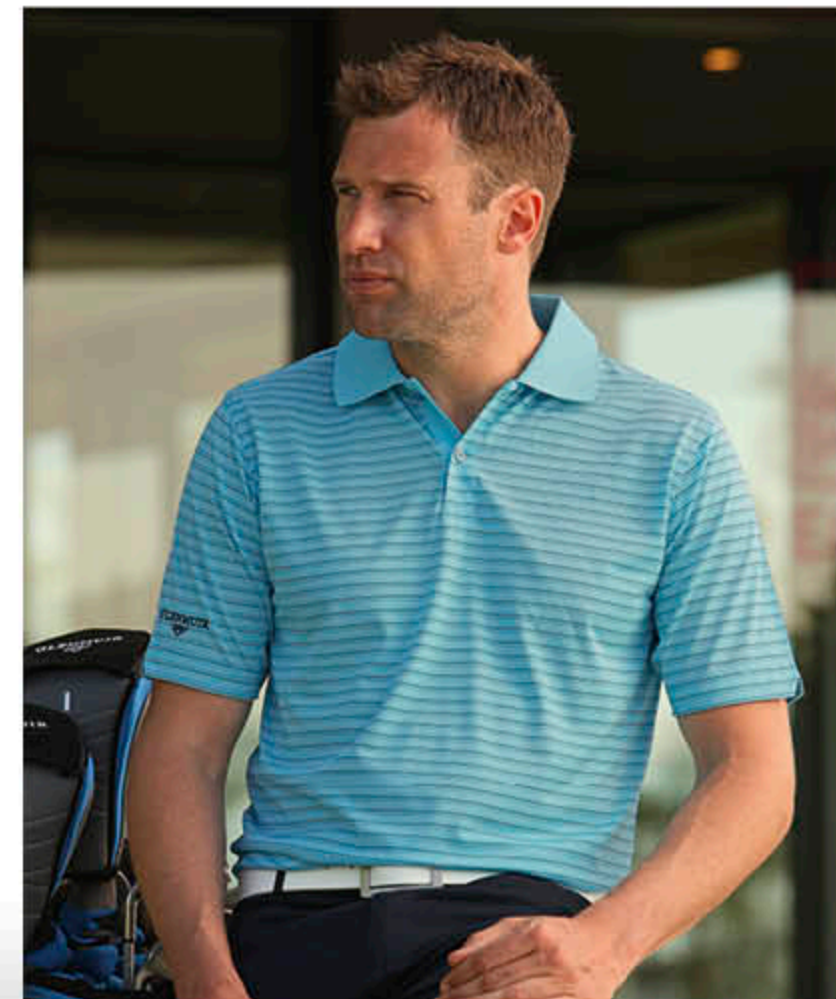
**Ravelston** GSH7143 S-XXL

Shown in Lagoon/Navy/Cobalt/White.

100% polyester performance Euro Fit polo with moisture wicking and quick dry technology. Multi-stripe design with rib collar. Glenmuir 1891 embroidery on right sleeve.



Iris Black Rose Winter White Lagoon Navy Cobalt White Black Starfish Steel White



**Baffin** GSH7132 S-XXL **Hi Cool**

Shown in Black.

Compression base layer long sleeve mock neck. Performance fabric in an engineered design which hugs the body enhancing circulation and stamina. Hi-Cool® moisture management technology keeps you dry and comfortable. 84% Hi-Cool® polyester 16% elastane jersey.



Black White





**Culzean** BC6320VN XS-XL

Shown in Tartan Green.

100% 2/15s cashmere v-neck sweater. Saddle shoulder. Handwash only.

Culzean, Hailes and Brodick are available in the following colours:



**Hailes** BC6410CN XS-XL

Shown in Navy.

100% 2/15s cashmere crew neck sweater. Full cardigan stitch. Saddle shoulder. Handwash only.



**Brodick** BC6321CN XS-XL

Shown in Claret.

100% 2/15s cashmere crew neck sweater. Saddle shoulder. Handwash only.



**Kinsale** BPLM6647VN S-XXL *Lamora*

Shown in Iris.

75% extra fine merino 25% angora Lamora® high v-neck sweater. Ripple stitch on collar. 1891 woven tab at left side seam.



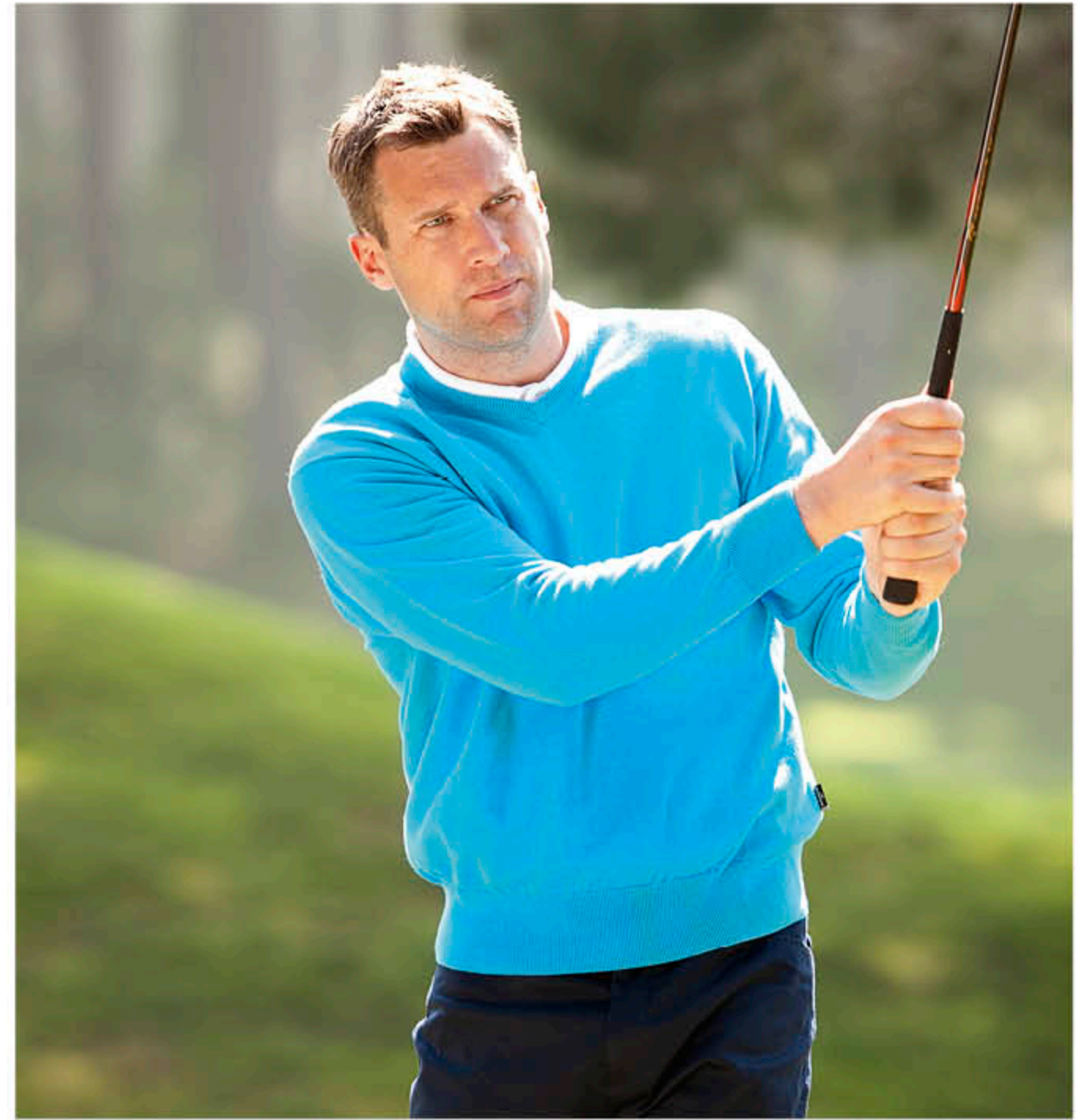


**GLENMUIR**  
1891

**Thornton SIC7079S0 S-XXL**

Shown in Charcoal.

100% 2/32s supersoft lightweight cotton v-neck slipover. 1891 woven tab at left side seam.

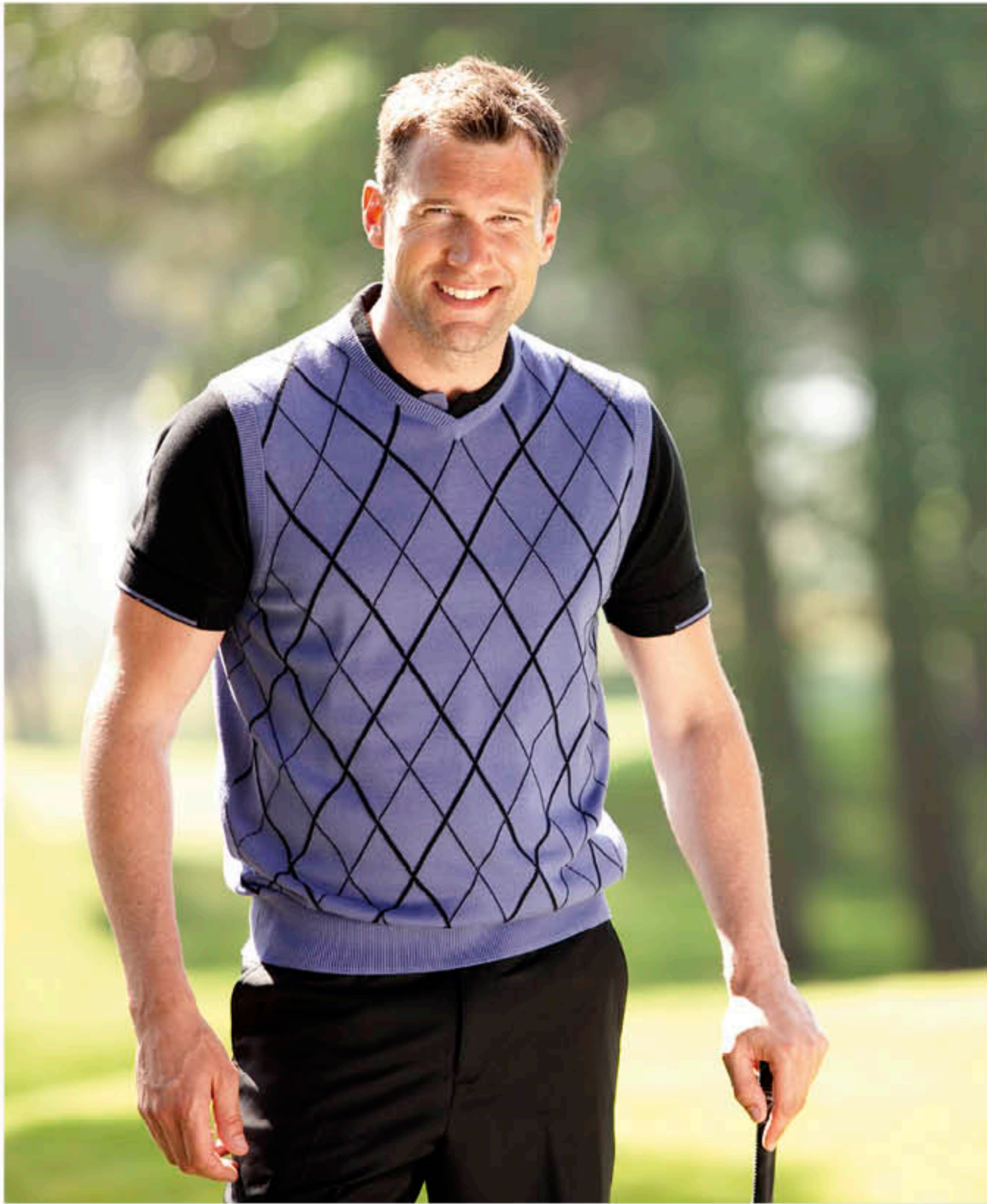


**Eden SIC6884VN S-XXL**

Shown in Cobalt.

100% 2/32s supersoft lightweight cotton v-neck sweater. 1891 woven tab at left side seam.





**Shandwick** SIC713950 S-XXL

SEASONAL FORECAST

Shown in Iris/Black.

100% 2/32s supersoft lightweight cotton v-neck slipover. Raker design on front panel. Glenmuir woven tab at left side seam.

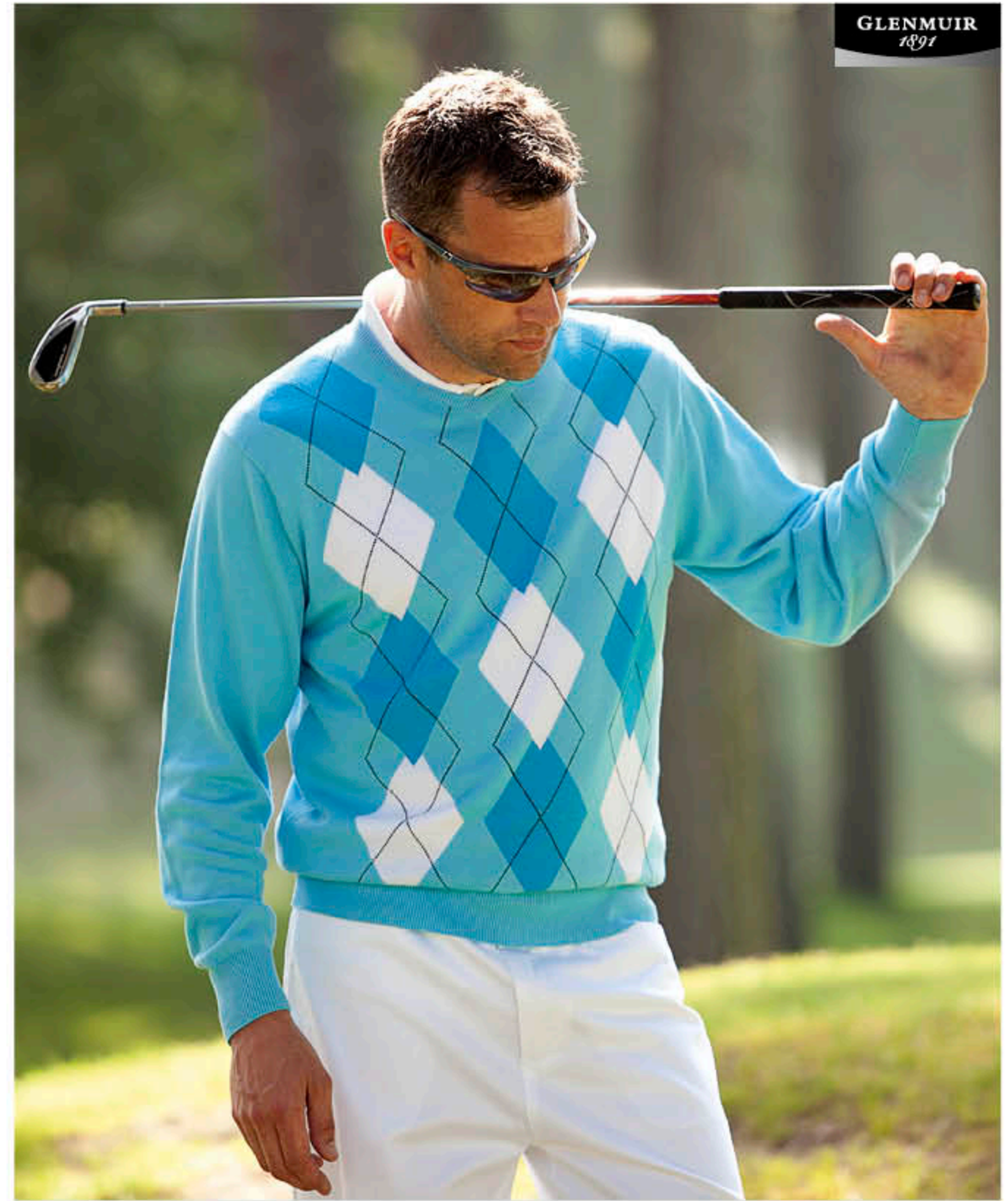


Iris Black

Lagoon White

Black Winter White

GLENMUIR 1891



**Melville** SIC7140VN S-XXL

SEASONAL FORECAST

Shown in Lagoon/Cobalt/White/Navy.

100% 2/32s supersoft lightweight cotton v-neck sweater. Argyle design on front panel. Glenmuir woven tab at left side seam.



Black Iris Winter White Rose

Lagoon Cobalt White Navy

Charcoal Grey Mix Pearl Grey White



**Woburn** SIC69612N S-XXL

Shown in Black.

100% supersoft cotton zip neck sweater. Raglan sleeve with cover stitch detail on front panels, raglan seams, cuffs and welt. Glenmuir woven tab at left side seam.



**Falmouth** GF7148 S-XXL

SEASONAL FRESHNESS

Shown in Black.

100% cotton interlock zip neck top. Seam detail on body and sleeves. Glenmuir 1891 embroidery on sleeve.

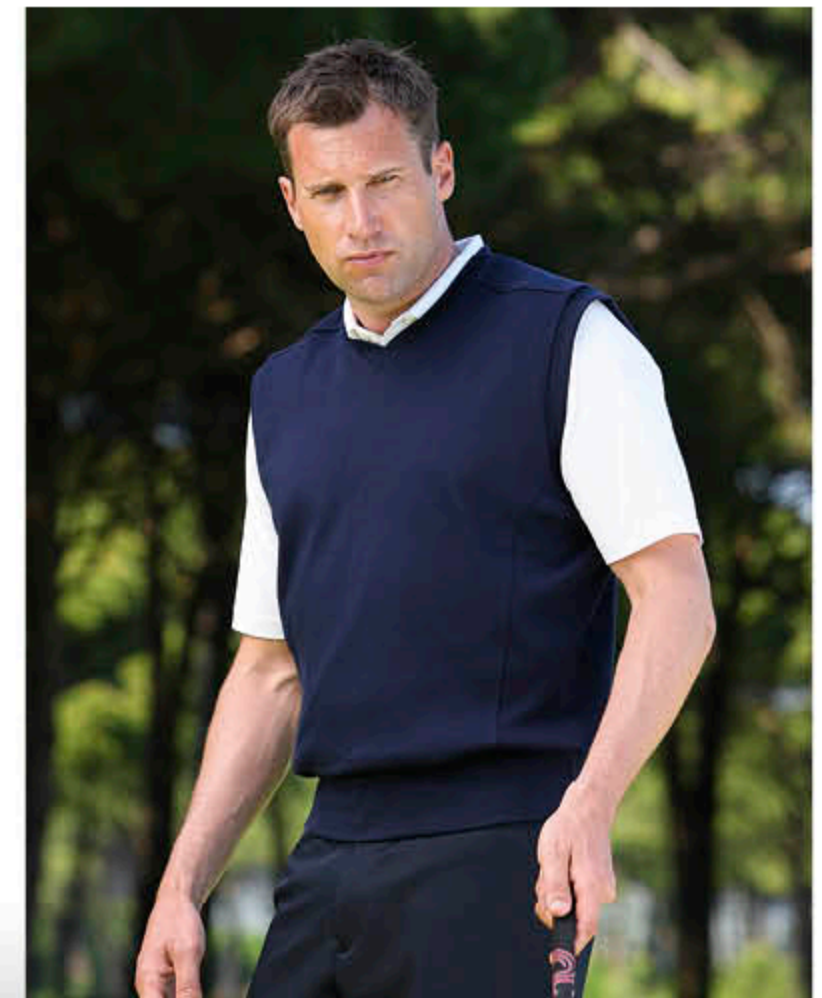


**Bodmin** GF7147 S-XXL

SEASONAL FRESHNESS

Shown in Navy.

100% cotton interlock slipover with seam detail on shoulders and body panel. Ribbed v-neck, armholes and welt. Glenmuir 1891 embroidery on shoulder.





**Hoy** SIL6380ZN S-XXL

Shown in Lagoon.

100% machine washable lambswool quarter zip sweater. Ribbed sleeves and neck. Saddle shoulder. Glenmuir woven tab at left side seam.



Iris Lagoon Navy Lead Burnished Black Linen Paradise



**GLENMUIR**  
1891

**Thames** SIL7121VN S-XXL

Shown in Navy/Lagoory/Winter White.

100% machine washable lambswool v-neck sweater. Diamond intarsia front panel. Glenmuir woven tab at left side seam.



Iris Black Winter White Navy Lagoory Winter White Lead Mercury Charcoal Navy Satellite Mosaic



**GLENMUIR**  
1891



**Lomond BPL5900VN S-XXL**

Shown in Cucumber.

100% lambswool v-neck sweater.  
Machine washable. Available in xs\*.



Alpine Pink



Lilac      Rose      Hot Pink      Iris



Winter White      Lemon Sorbet      Garnet      Bordeaux



Linen      Camel\*      Burnished      Latte



Light Grey      Grey Mix      Charcoal      Black\*



Lagoon      Tartan Green      Cucumber      Bottle\*



Paradise      Light Blue\*      Sapphire      Navy\*



**GLENMUIR**  
1891



**Morar** BPL5902CN S-XXL

Shown in Rose.

100% lambswool crew neck sweater.  
Machine washable. Available in xs.\*



Alpine Pink



Lilac

Rose

Hot Pink

Iris



Winter White

Lemon Sorbet

Garnet

Bordeaux



Linen

Camel\*

Burnished

Latte



Light Grey

Grey Mix

Charcoal

Black\*



Lagoon

Tartan Green

Cucumber

Bottle\*



Paradise

Light Blue\*

Sapphire

Navy\*



**Windermere** BPL5901SO S-XXL



Shown in Navy.

100% lambswool v-neck slipover.  
Machine washable. Available in xs.\*





**Finlay AL6103VN S-XXL**

Shown in Light Grey.

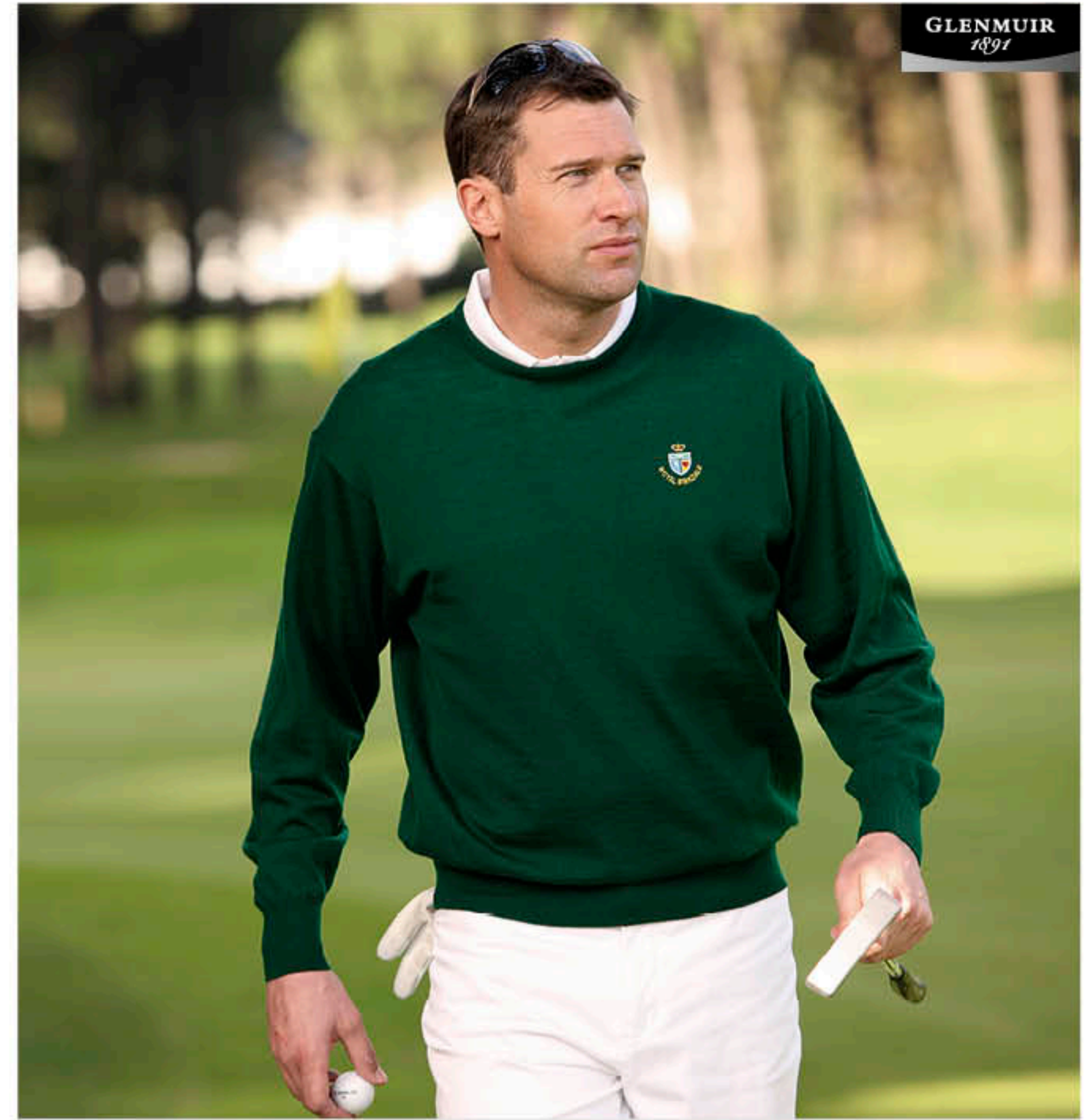
100% 2/30s lightweight fine merino wool v-neck sweater. Machine washable.



Iris Hot Pink Garnet Lemon Linen Latte



Black Charcoal Light Grey Tartan Green Cobalt Lagoon Paradise Light Blue Dark Navy



**GLENMUIR**  
1891

**Kirkton AL6351CN S-XXL**

Shown in Tartan Green.

100% 2/30s lightweight fine merino wool crew neck sweater. Machine washable.



Tartan Green Linen Latte Black Dark Navy



Charcoal Paradise



**Lauder AL6104SO S-XXL**

Shown in Garnet.

100% 2/30s lightweight fine merino wool v-neck slipover. Machine washable.



**Tay BW5932CN S-XXL**



Shown in Dark Navy.

100% 2/30s heavyweight fine merino wool, crew neck sweater. Machine washable. 1891 woven tab at left side seam.



**Dee BW5930VN S-XXL**



Shown in Garnet.

100% 2/30s heavyweight fine merino wool, v-neck sweater. Machine washable. 1891 woven tab at left side seam.





**NANO-TECHNOLOGY PERFORMANCE**



- Water repellent.
- Oil and soil repellent.
- Keeps colours and fabrics looking new.
- Dries textiles more rapidly.
- Breathable.
- Weatherproof.

**Wrexham** SIL7038ZC S-XXL



Shown in Black/Lead.

80% lambswool 20% polyamide zip neck sweater. Contrast panels on body and sleeves. Nano-technology water repellent finish. Glenmuir 1891 embroidery on right sleeve. Machine washable.



Navy Satellite Marl  
Black Lead



**Willoughby** GF7144 S-XXL



Shown in Lead/Black/Garnet.

Storm Bloc® zip front jacket with seam details and zipped chest pocket. High performance bonded fleece repels the wind and rain keeping you warm and comfortable. Glenmuir 1891 and Storm Bloc® embroideries. 3 layer 100% polyester bonded fleece.



Lead Black Garnet  
Navy Cobalt



**Storm Bloc® Team** GWS6968 S-XXL

Shown in Cobalt/Navy.

Long sleeve v-neck Teflon coated peached microfibre wind shirt with lightweight lining. Side pockets. Contrast tipping and stripe on rib collar, cuffs and welt. Glenmuir 1891 logo on right sleeve and Storm Bloc® logo on back collar.



Cobalt Navy Silver Graphite Black Graphite



Stone Black Navy Ink Garnet Black



**Storm Bloc® Vest** GWS6997 S-XXL

Shown in Silver/Graphite.

Teflon coated peached microfibre wind vest with lightweight lining. Contrast tipping and stripe on rib collar. Glenmuir Storm Bloc® logo on back neck.



Cobalt Navy Silver Graphite Black Graphite



Stone Black Navy Ink



**Storm Bloc® Pro** GWS6971 S-XXL

Shown in Stone/Black.

Long sleeve Teflon coated peached microfibre wind shirt with lightweight lining. Jetted zip neck. Adjustable draw cord hem. Contrast colour striping on body and sleeves. Glenmuir 1891 logo on right sleeve and Storm Bloc® logo on back collar.



Silver Graphite Black Graphite Stone Black



Navy Ink Garnet Black



**Storm Bloc® Club** GWS6972 S-XXL

Shown in Navy/Ink.

Half sleeve Teflon coated peached microfibre wind shirt with lightweight lining. Jetted zip neck. Adjustable draw cord hem. Contrast colour striping on body and sleeves. Glenmuir 1891 logo on right sleeve and Storm Bloc® logo on back collar.



Silver Graphite Black Graphite Stone Black



Navy Ink Blue Stone





**Rogart GWS7088 S-XXL**

Shown in Mercury/Black.

86% polyester 14% elastane, soft touch, Teflon coated stretch long sleeve, zip neck windshirt. Contrast side panels and piping. Adjustable drawcord at hem and two pockets. Teflon repel protector delivers durable water and oil resistance wash after wash. Glenmuir 1891 print on front body panel and Storm Bloc® print on back collar.



Navy Stone      Black Kingfisher      Mercury Black



**Balintore GWS7089 S-XXL**

Shown in Black/Kingfisher.

86% polyester 14% elastane, soft touch, Teflon coated stretch half sleeve, zip neck windshirt. Contrast side panels and piping. Adjustable drawcord at hem and two pockets. Teflon repel protector delivers durable water and oil resistance wash after wash. Glenmuir 1891 print on front body panel and Storm Bloc® print on back collar.



Navy Stone      Black Kingfisher      Mercury Black



**Ossian MG7128 S-XXL**



Shown in Black.

Men's padded gilet with stretch fleece side and shoulder panels for comfort and fit. Two front pockets. Outer - 100% nylon ripstop, stretch panels - 100% polyester fleece. Glenmuir Storm Bloc® embroidery on centre back collar. Teflon coating delivers durable water and oil resistance wash after wash.



Navy      Lead      Black

**RAIN BLOC® LAMINATE**

Our Rain Bloc® laminate waterproof system combines a supersoft lightweight waterproof laminated microfibre outer fabric and a breathable micro-mesh lining.



**Rain Bloc® Light**

WPJ6919 S-XXL

Shown in Navy/Azure.

Lightweight waterproof jacket with 3 year guarantee. Quiet lightweight and breathable laminated microfibre outer with ultra-light breathable micro-mesh lining. Concealed zip-off sleeves and stretch panel at back shoulders. Water repellent full length zip and pocket zips. Adjustable velcro side tabs and draw cord hem. Back scorecard pocket. Glenmuir 1891 logo on right sleeve and Rain Bloc® branding on back collar and front pocket.



Navy Azure    Black Graphite    Black Garnet



**Rain Bloc® Drive**

MWT6984 S-XXL

SHORT (29") (74CM)

REG (31") (79CM)

LONG (33") (84CM)

Shown in Navy.

Lightweight waterproof trouser with 3 year guarantee. Quiet lightweight and breathable laminated microfibre outer with lightweight breathable lining. Two front pockets and back scorecard pocket. Flat front elasticated waistband with drawstring adjuster and zip fly. Leg zips with storm flaps, velcro adjuster, and fit studs. Glenmuir 1891 logo on back pocket and Rain Bloc® branding at zip guard.



Navy    Black



**Rain Bloc® Pro WPJ6976 S-XXL**

Shown in Garnet.

Lightweight waterproof zip neck top with 3 year guarantee. Quiet lightweight and breathable laminated microfibre outer with ultra-light breathable micro-mesh lining. Water repellent zip neck and side pocket zips. Stretch panel at back shoulders. Adjustable velcro side tabs and draw cord hem. Back scorecard pocket. Glenmuir 1891 logo on right sleeve and Rain Bloc® branding on back collar and front pocket.



Navy    Black    Garnet



**Rain Bloc® Club WPJ6975 S-XXL**

Shown in Silver.

Lightweight waterproof half sleeve zip neck top with 3 year guarantee. Quiet lightweight and breathable laminated microfibre outer with ultra-light breathable micro-mesh lining. Water repellent zip neck and side pocket zips. Stretch panel at back shoulders. Adjustable velcro side tabs and draw cord hem. Back scorecard pocket. Glenmuir 1891 logo on right sleeve and Rain Bloc® branding on back collar and front pocket.



Navy    Black    Silver    Garnet





**Struie MT7108**

UK 30"-42" SHORT(29")  
REG(31") LONG(33")

EUR 76cm-107cm SHORT(74cm)  
REG(79cm) LONG(84cm)

Shown in Khaki.

Cotton/elastane flat front stretch trouser. Two front pockets and two back pockets. Glenmuir 1891 embroidery above back pocket.



Black Navy



Khaki White



Mercury

**GLENMUIR**  
1891



**Stenton MS7106**

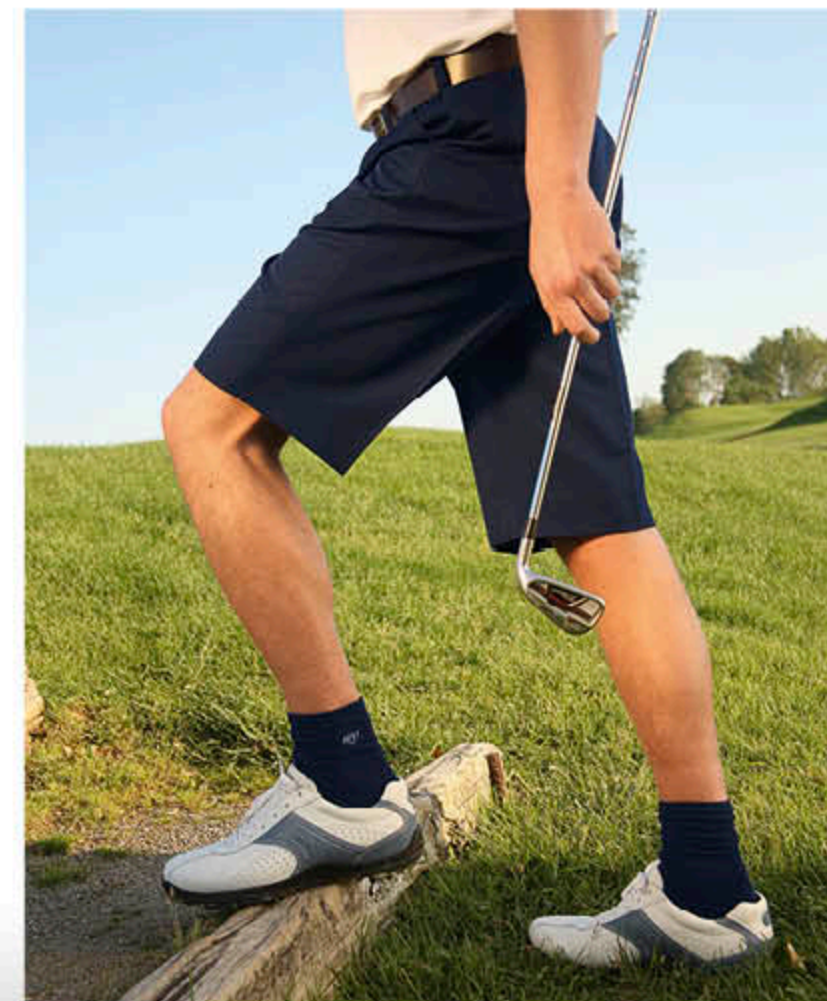
UK 30"-42"  
EUR 76cm-107cm

Shown in Navy.

100% polyester microfibre men's shorts. Flat front with two front pockets and two back pockets. Glenmuir 1891 embroidery above back pocket.



Black Navy Stone



**Delny MT7107**

UK 30"-42" SHORT(29")  
REG(31") LONG(33")

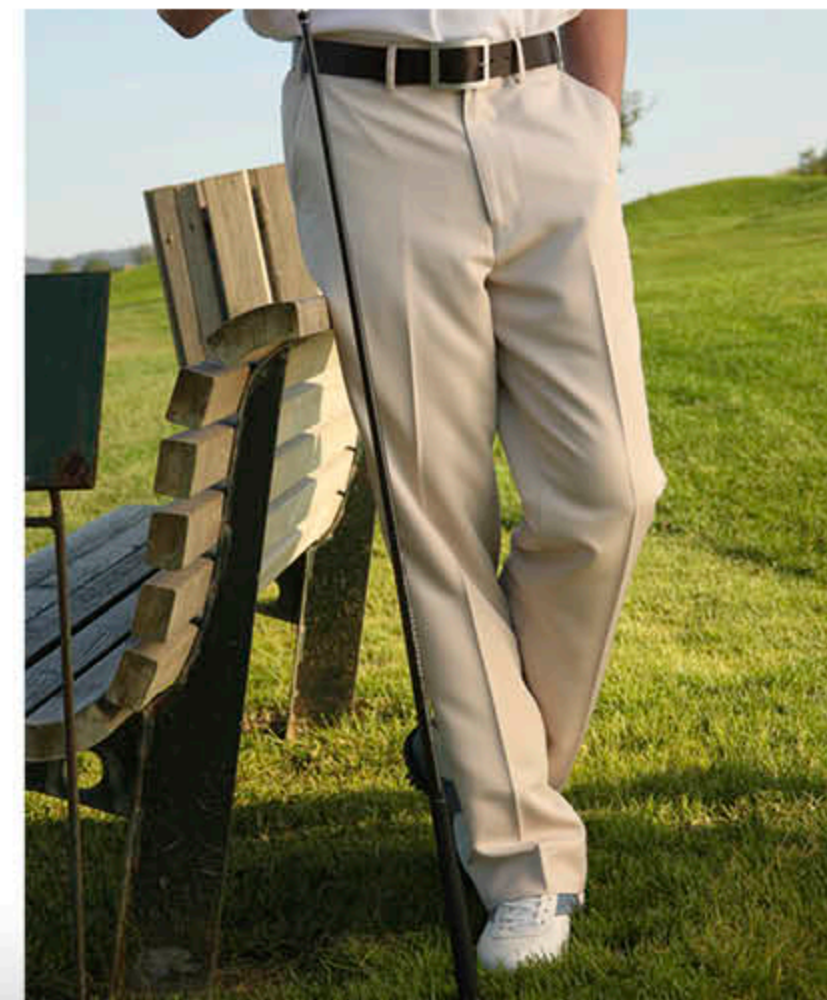
EUR 76cm-107cm SHORT(74cm)  
REG(79cm) LONG(84cm)

Shown in Stone.

100% polyester microfibre men's trousers. Flat front with two front pockets and two back pockets. Glenmuir 1891 embroidery above back pocket.



Black Navy Stone





# Ladies' Collection

Spring Summer 2012

**GLENMUIR**  
1891



## Sophie LSH2241 XS-XL

Shown in Starfish.

95% cotton 5% elastane stretch baby pique shaped fit solid colour polo. Glenmuir woven tab on right sleeve hem. Junior sizes available in selected colours. See page 98 for details.





STRETCH

**Mallow** LSH2242 XS-XL

Shown in Lagoon.

95% cotton 5% elastane stretch baby pique shaped fit solid colour sleeveless polo. Glenmuir woven tab at left side seam.



Rose



Lagoon Lilac White Paradise



Latte Alpine Pink Hot Pink Light Blue

**GLENMUIR**

**Michelle** LSH2353 XS-XL

SEASONAL PICK

Shown in Paradise.

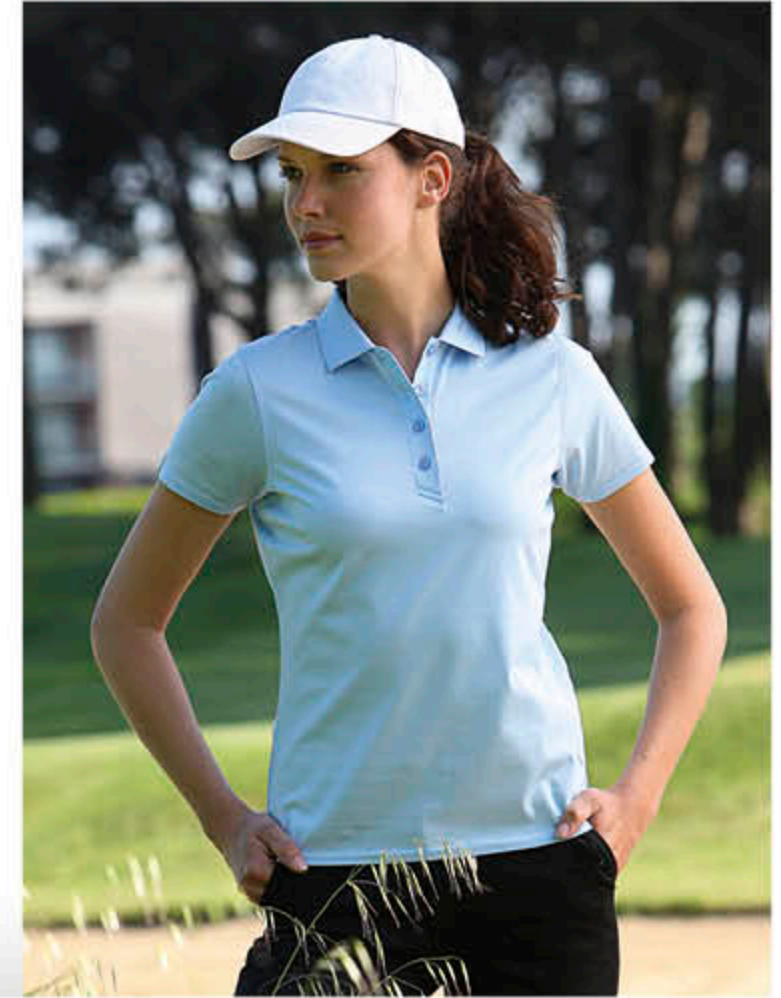
100% mercerised 2/70s combed cotton jersey solid colour shaped fit luxury polo. Cotton elastane anti-curl rib collar. Glenmuir woven tab on right sleeve hem.



Rose Lagoon Hot Pink White



Lilac Black Paradise



STRETCH

**Tess** LSH2412 XS-XL

Shown in Glamour.

95% cotton 5% elastane stretch baby pique shaped fit solid colour, long sleeve polo shirt. Glenmuir woven tab at left side seam.



Rose Lagoon White



Glamour Black Winter White

**Madelaine** LSH2352 XS-XL

SEASONAL PICK

Shown in White/Hot Pink.

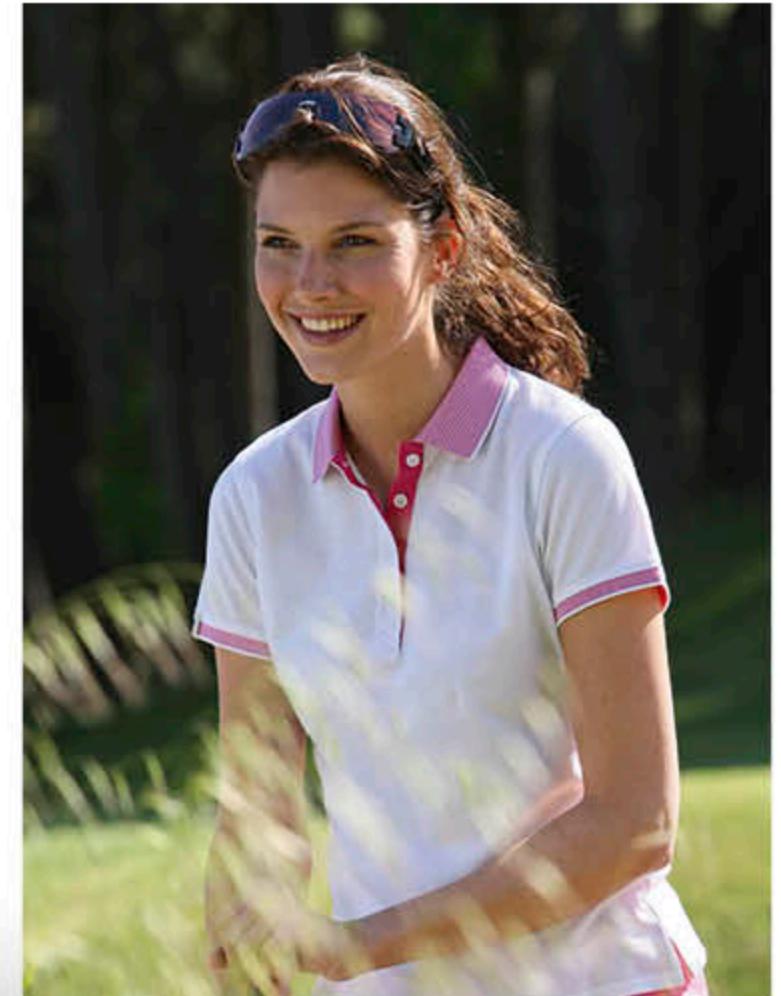
100% mercerised combed cotton pique shaped fit luxury polo. Cotton elastane contrast birdseye collar and cuffs. Glenmuir woven tab on right sleeve hem.



White Iris White Hot Pink White Lilac



White Black White Paradise





**Carnie** LSH2179 XS-XL



Shown in Paradise.

95% cotton 5% elastane stretch jersey shaped fit solid colour polo. Glenmuir woven tab on right sleeve hem.



Raspberry White Paradise Navy

**GLENMUIR**

**Greta** LSH2425 XS-XL **Hi Cool**

Shown in Black.

Compression base layer long sleeve mock neck. Performance fabric in an engineered design which hugs the body enhancing circulation and stamina. Hi-Cool® moisture management technology keeps you dry and comfortable. 84% Hi-Cool® polyester 16% elastane jersey.



White Black



**Hayley** LSH2211 XS-XL



Shown in Winter White.

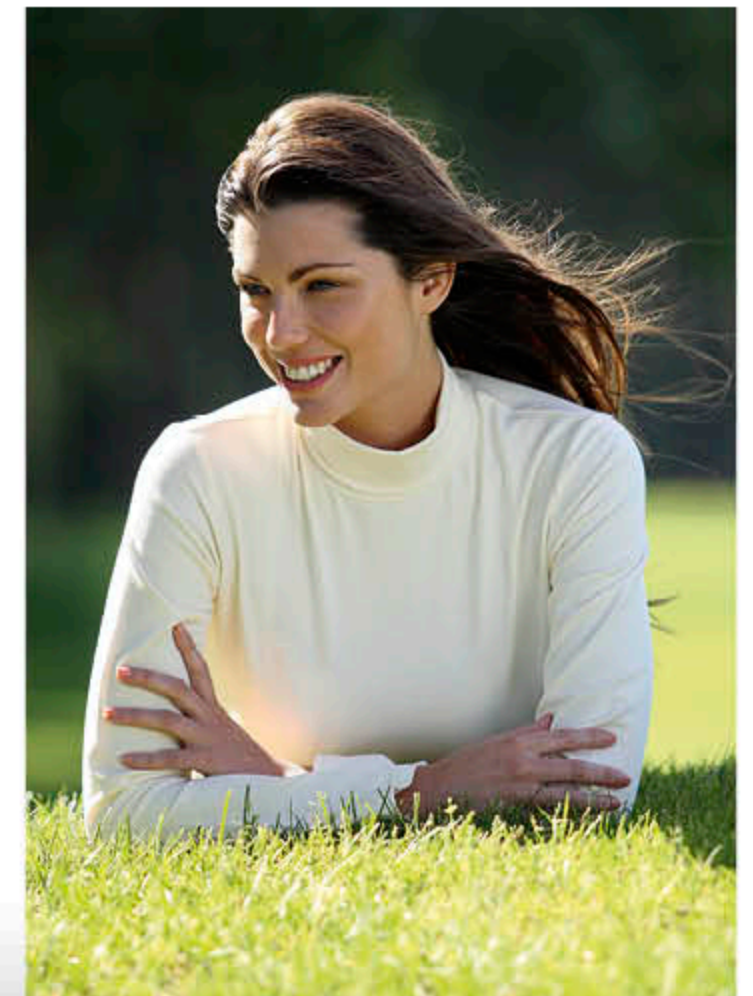
95% cotton 5% elastane stretch jersey solid colour shirt. Shaped fit long sleeve with roll collar. Glenmuir woven tab at left side seam.

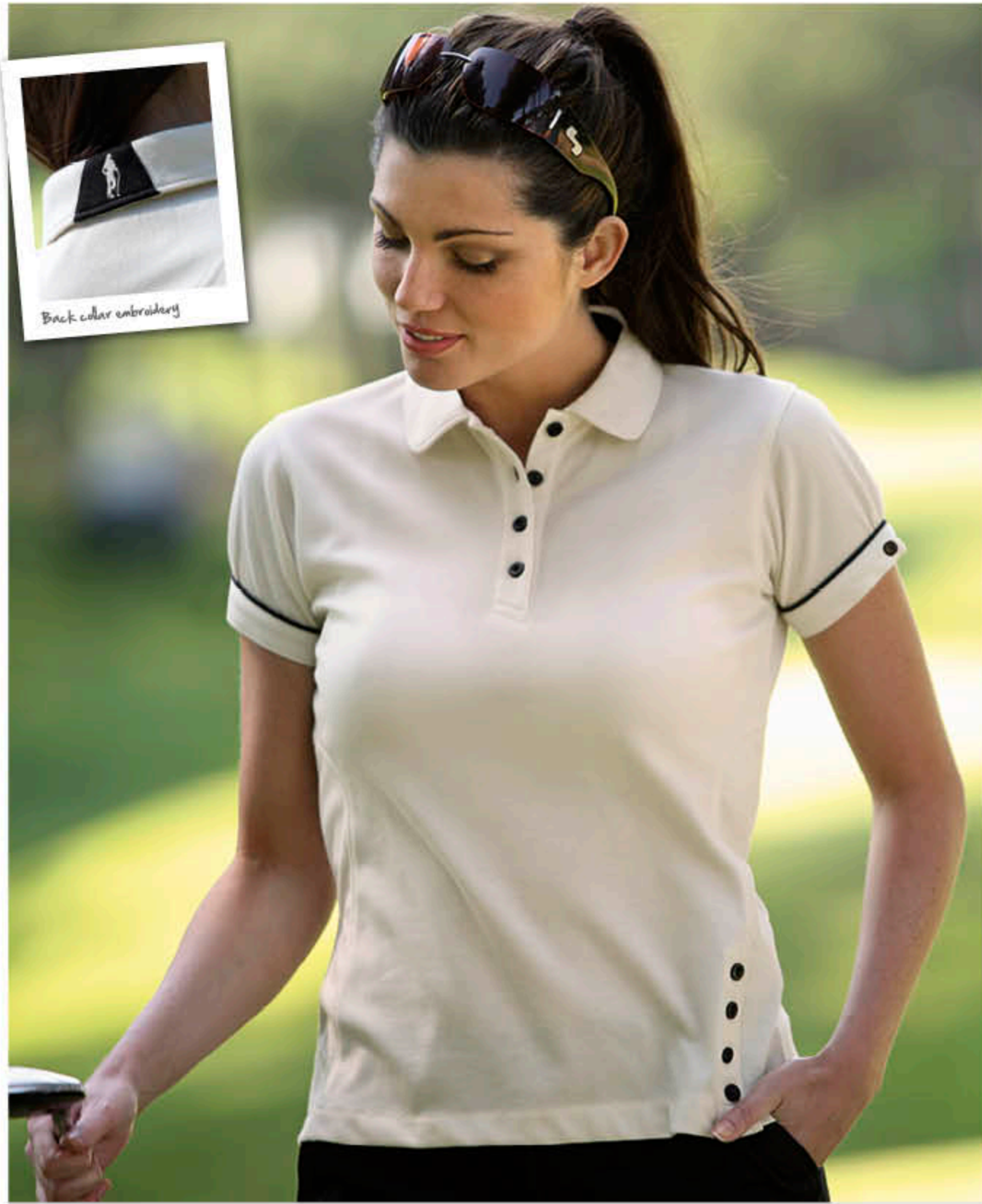


Black Glamour White Navy



Paradise Winter White Lilac





Back collar embroidery

**Collette** LSH2428 XS-XL **SEASONAL FAVORITE** **Hi Cool**

Shown in Winter White/Black.

Cotton polyester jersey performance polo with Hi-Cool® moisture management system. Short sleeve polo with contrast button detail at hem and piping detail on cuffs. Glenmuir icon embroidery on insert at centre back collar.



Iris Winter White White Lagoon Winter White Black

**GLENMUIR**

**SEASONAL FAVORITE** **Hi Cool**

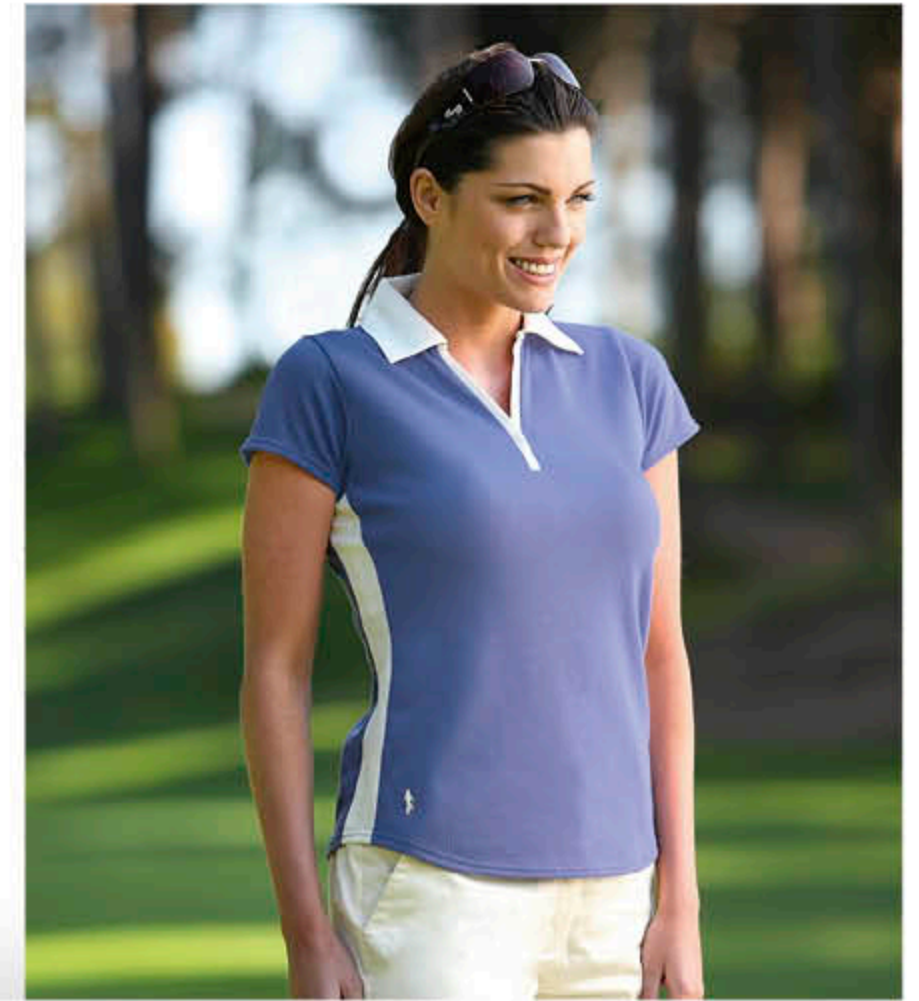
**Holly** LSH6953 XS-XL

Shown in Iris/Winter White.

Cotton polyester jersey performance polo with Hi-Cool® moisture management system. Short sleeved shaped fit with single button open placket in contrast colour. Contrast self fabric anti-curl collar. Contrast colour side panels. Glenmuir icon print at right hem.



Winter White Rose Iris Winter White Lagoon White



**SEASONAL FAVORITE**

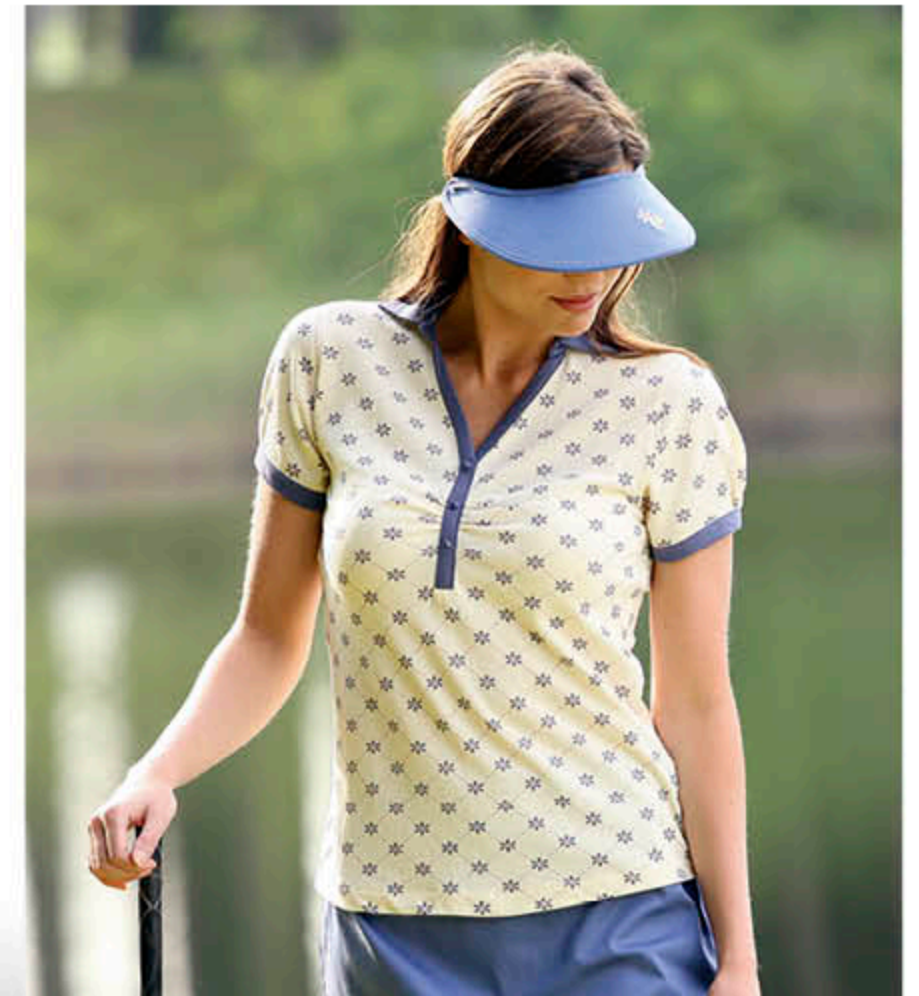
**Tillie** LSH2429 XS-XL

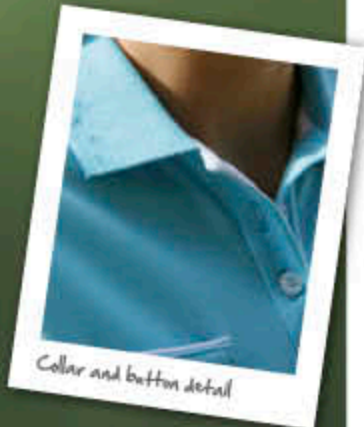
Shown in Winter White/Iris/Rose.

95% cotton 5% elastane pique shirt with Forget Me Not print. Subtle gathering at cuff and bust. Contrast collar and cuffs. Mock button placket. Glenmuir icon embroidery at right hem. Co-ordinates with Tallulah skort and Chloe visor.



Winter White Iris Rose White Lagoon Navy





Collar and button detail

**Keira** LSH2432 XS-XL NEW

Shown in Lagoon/White.

95% cotton 5% elastane pique shirt with pointelle detail on collar and cuffs. Chest pocket with contrast trim and button. Glenmuir icon embroidery at right hem.



Rose Winter White Lagoon White

GLENMUIR



SEASONAL PICKING **Hi Cool**

**Allegra** LSH2427 XS-XL

Shown in Winter White/Iris.

Cotton polyester jersey performance polo with Hi-Cool® moisture management system. Short sleeve polo with contrast piping detail and self fabric collar. Glenmuir icon print at right hem. Worn with the Tallulah skirt.



Winter White Iris Lagoon White



**Tanya** LSH2430 XS-XL

**NEW**

Shown in Lagoon/White.

95% cotton 5% elastane pique shirt with stripe panels on front and back. Feature button placket, self fabric collar and Glenmuir icon embroidery at right hem.



Rose Winter White Lagoon White



GLENMUIR

**Serena** LSH2431 XS-XL

**NEW**

Shown in Rose/Winter White.

95% cotton 5% elastane pique shirt with stripe V insert at centre front neck. Self fabric collar and Glenmuir icon embroidery at right hem.



Rose Winter White Lagoon White



**GLENMUIR**

easy care

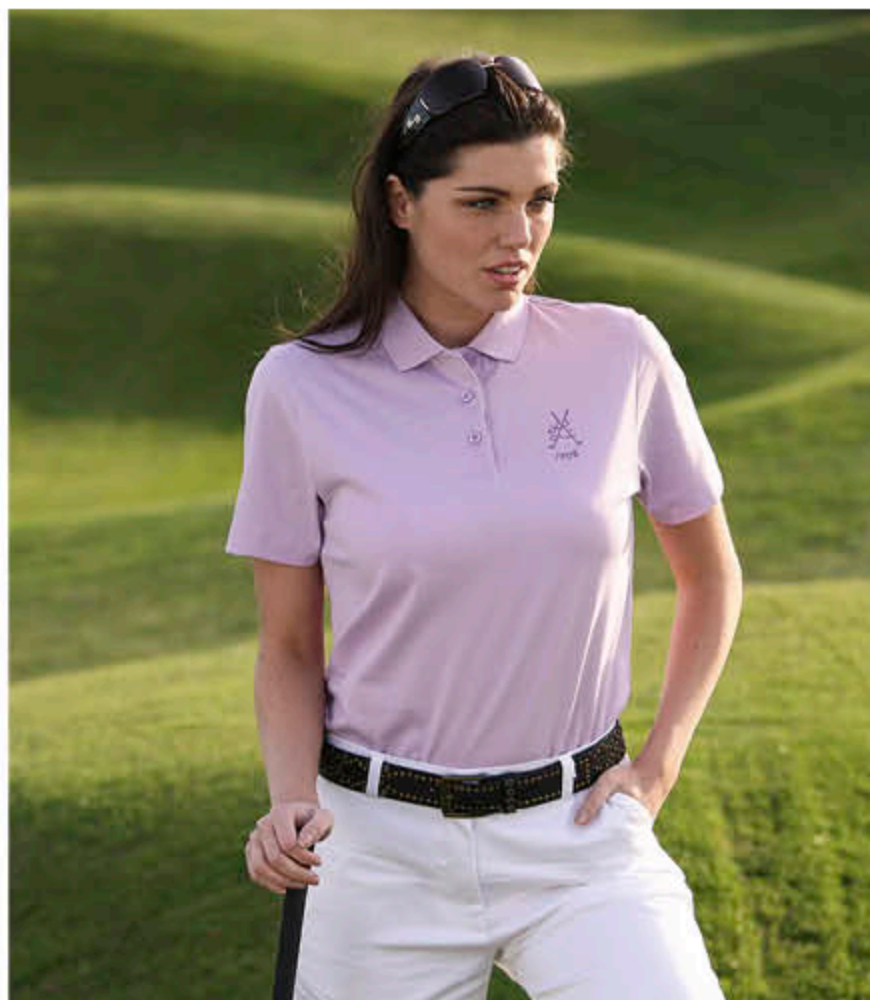
**Marion** LSH5396HK S-XL

Shown in White.

Easycare cotton polyester blend jersey solid colour classic fit sleeveless polo. Glenmuir woven tab at left side seam.



White Light Yellow Pink



easy care

**Iona** LSH5399HK S-XL

Shown in Lilac.

Easycare cotton polyester blend jersey solid colour polo. Classic fit with open sleeve. Glenmuir woven tab on right sleeve hem.



Lilac White Light Yellow



Alpine Pink Paradise

*Cashmere*  
made in Scotland

Roslin and Ness are available in all the following colours. Tilda is only available in the colours shown with an asterisk:



**Tilda** LBC2406VN S-L

Shown in Rose.

100% 2/28s fine gauge cashmere v-neck sweater with mock pocket trim and deep rib welt. Handwash only.



**Roslin** LBC2124CC S-L

Shown in Paradise.

100% 2/28s fine gauge cashmere high button close fit cardigan. Handwash only.



**Ness** LBC2123CN S-L

Shown in Alpine Pink.

100% 2/28s fine gauge cashmere crew neck close fit sweater. Handwash only.



**Yasmin** SIL2387VN XS-XL

Shown in Cobalt.

100% supersoft cotton v-neck long sleeve sweater. Glenmuir icon embroidery above right welt.



Rose Iris



Lagoon Cobalt Starfish Berry Glamour Satellite



Navy Winter White Yellow White Black

**Astrid** SIL2442SO XS-XL

Not shown.

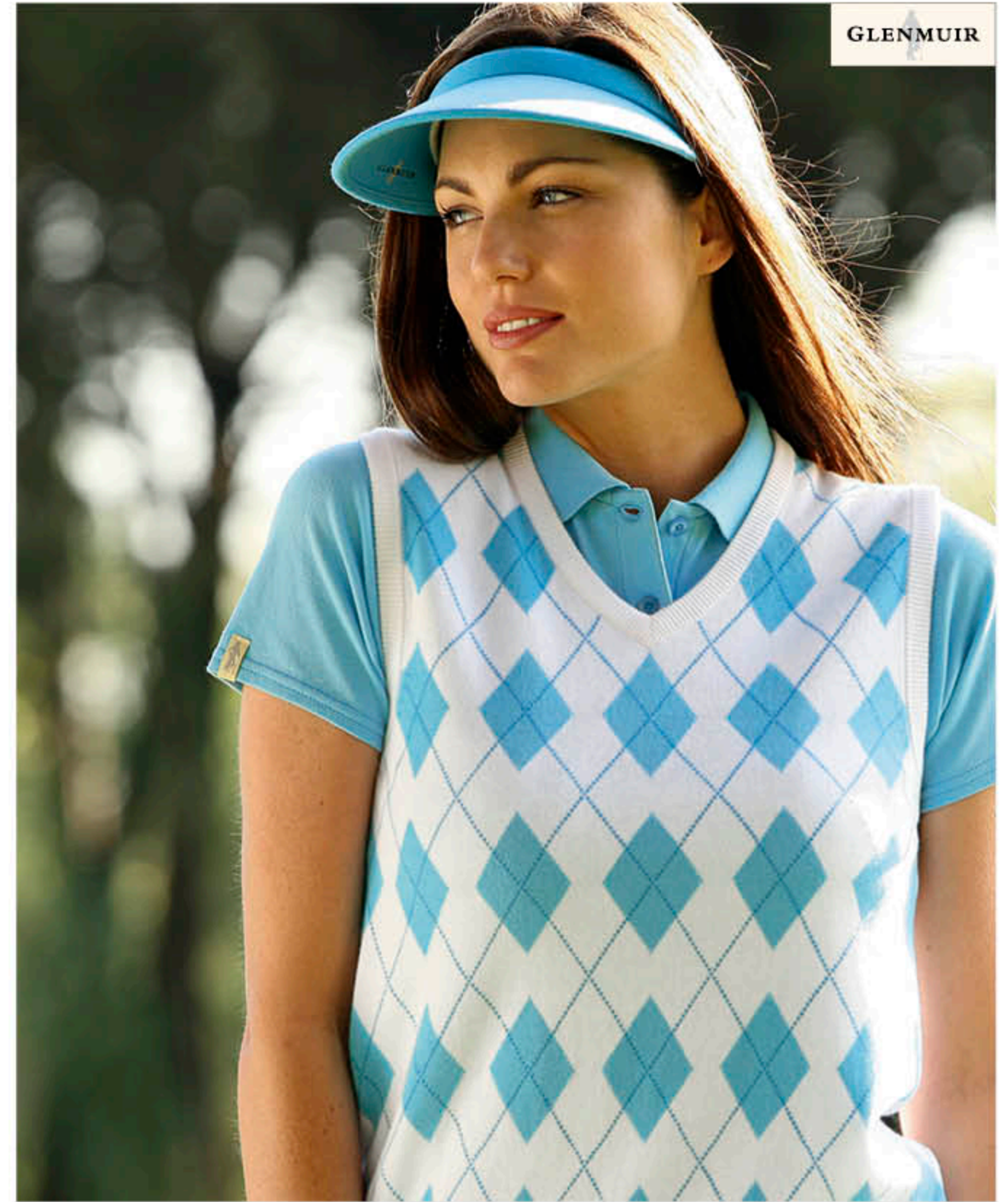
Selected colours also available in our new Astrid slipover. 100% supersoft cotton v-neck slipover. Glenmuir icon embroidery above right welt.



Rose Iris



Lagoon Navy



**Abigail** SIL2439SO XS-XL

SEASONAL PUSING 20

Shown in White/Lagoon/Cobalt.

100% supersoft cotton v-neck slipover. Diamond intarsia design on front body panel. Glenmuir icon embroidery above right welt.



Iris Winter White Rose White Lagoon Cobalt



**Maxine** SIL2436VN XS-XL

SEASONAL FAVORITE

Shown in Lagoon/White/Cobalt.

100% supersoft cotton v-neck sweater. Diamond intarsia design at shoulders. Glenmuir icon embroidery above right welt.



Winter White  
Rose  
Iris

Lagoon  
White  
Cobalt

**GLENMUIR**

SEASONAL FAVORITE

**Saskia** SIL2433ZN XS-XL

Shown in Iris/Winter White/Rose.

100% supersoft cotton zip neck sweater. Diamond intarsia design on sleeves and contrast stripes on inner neck rib and cuff. Glenmuir icon embroidery above right welt.



Iris  
Winter White  
Rose

White  
Lagoon  
Cobalt



SEASONAL FAVORITE

**Paula** SIL2332ZN XS-XL

Shown in Hot Pink.

100% supersoft cotton zip neck sweater with ribbed panel detail on body and sleeves and ribbed collar. Glenmuir woven tab at left side seam.



Rose

Lagoon

Hot Pink



Navy

White

Black





**Orla** SIL2434ZC XS-XL SEASONAL PURCHASE

Shown in Black/Winter White.

100% supersoft cotton zip front gilet. Contrast stripes at centre front and armholes. Glenmuir icon embroidery above right welt.



Winter White Iris    Lagoon White    Black Winter White

**GLENMUIR**

SEASONAL PURCHASE

**Marilyn** SIL2435ZC XS-XL

Shown in Rose/Winter White.

100% supersoft cotton zip front cardigan. Contrast stripe detail at centre front and cuff. Glenmuir icon embroidery above right welt.



Rose Winter White    Navy Lagoon



SEASONAL PURCHASE

**Erin** SIL2388VN XS-XL

Shown in Rose/Winter White/Iris.

100% supersoft cotton v-neck long sleeve sweater. Diamond intarsia design on front body panel. Glenmuir icon embroidery above right welt.



Rose Winter White Iris    Lagoon White Cobalt



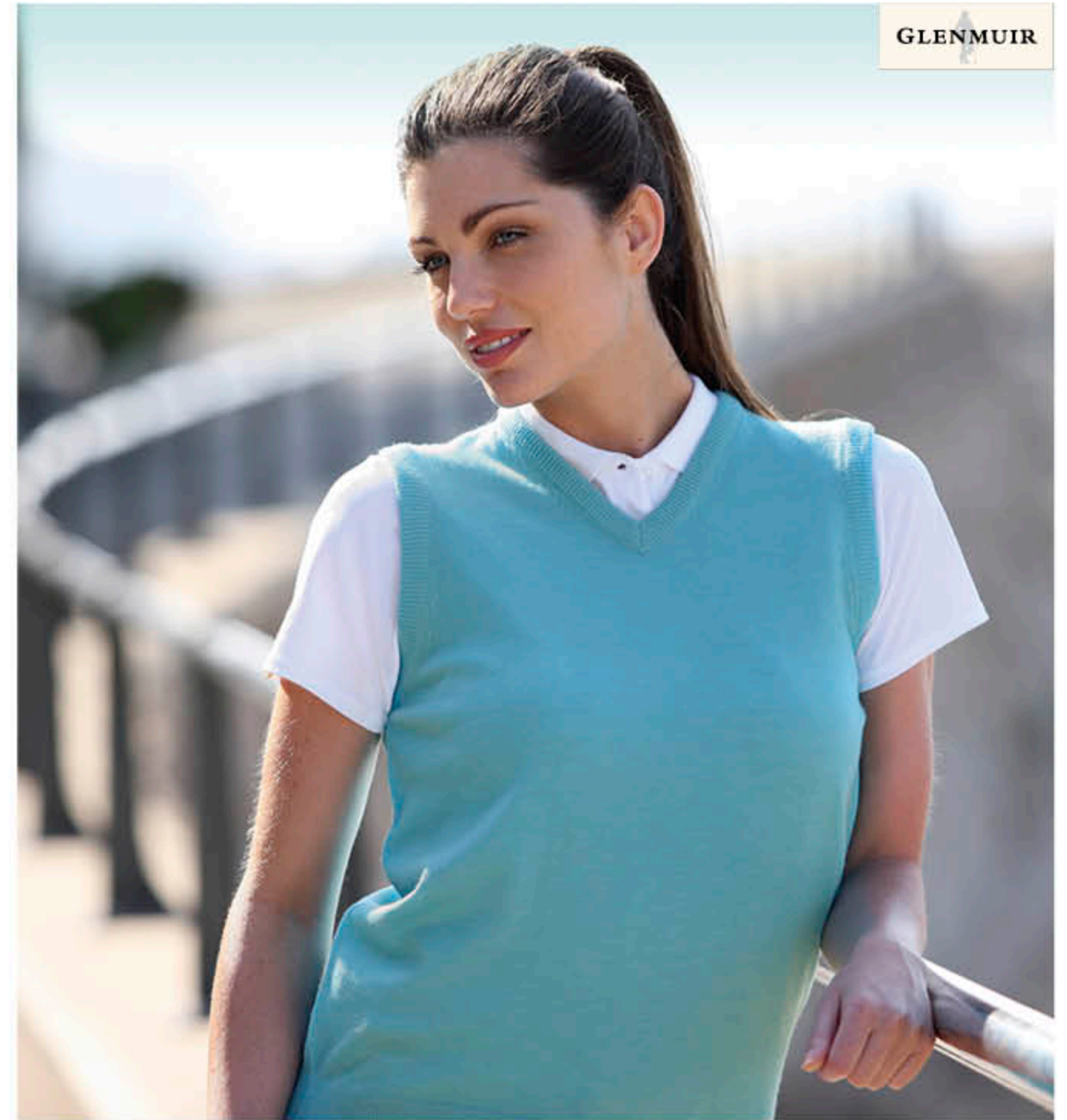


**Tabitha** BW2407VN XS-XL



Shown in Black.

100% 2/30s fine merino wool v-neck sweater. Machine washable.



GLENMUIR

**Ailsa** BW2276SO XS-XL



Shown in Lagoon.

100% 2/30s fine merino wool v-neck slipover. Machine washable.



GLENMUIR



**Sundridge** BPL2221CN XS-XL

Shown in Lagoon.

100% lambswool, raglan sleeve, crew neck sweater. Machine washable. Glenmuir woven tab at left side seam.



Rose Iris Lagoon Cucumber



Light Grey Lilac Raspberry Black



Paradise Burnished Winter White Alpine Pink



Hot Pink Garnet Crocus Light Blue



Helio Navy Mint Tartan Green



**GLENMUIR**



**Brunton BPL2256VN XS-XL**

Shown in Iris.

100% lambswool, raglan sleeve, v-neck sweater. Machine washable. Glenmuir woven tab at left side seam.



**Dornoch BPL2277S0 XS-XL**

Shown in Paradise.

100% lambswool v-neck slipover. Machine washable. Glenmuir woven tab at left side seam.





**Beatrice** LF2438 S-XL



Shown in Rose.

Zip front bonded fleece jacket with seam detail and zipped pockets. High performance stretch fabric repels wind and rain to keep you warm and comfortable. Glenmuir icon embroidery above right hem and Storm Bloc.\* embroidery on centre back collar.



Rose

Lagoon

**GLENMUIR**



**Charlotte** LWS2393 S-XL

Shown in Black/Peapod.

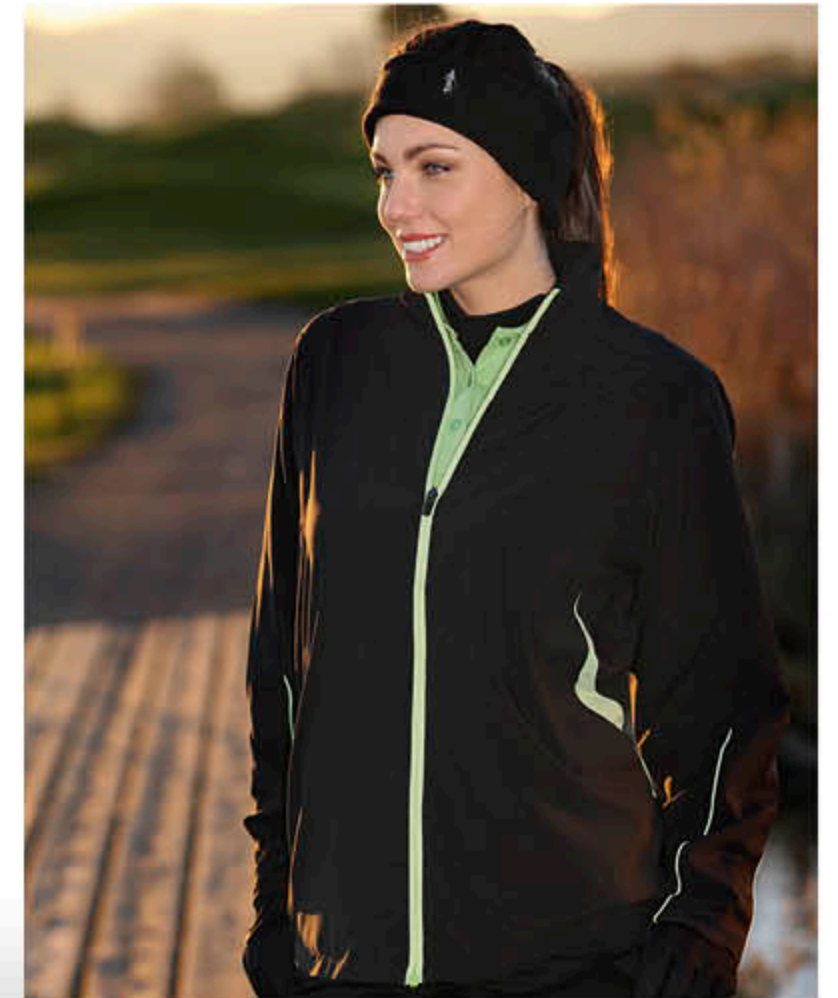
86% polyester 14% elastane, soft touch, Teflon coated stretch zip neck wind jacket. Contrast side panels and piping. Two front pockets. Teflon repel protector delivers durable water and oil resistance wash after wash. Glenmuir icon print above right hem and Storm Bloc.\* print on back collar.



White  
Hot Pink

Light Kingfisher  
Kingfisher

Black  
Peapod



**Poppy** LW62422 S-XL

Shown in Glamour/Black.

Ladies' quilted gilet with stretch fleece side panels for comfort and fit. Two front pockets. Outer - 100% nylon ripstop, stretch panels - 100% polyester fleece. Glenmuir Storm Bloc.\* embroidery on centre back neck and Glenmuir icon embroidery above right hem. Teflon coating delivers durable water and oil resistance wash after wash.



Glamour  
Black

Black  
Black

Satellite  
Black





**Storm Bloc® Gilet** LWG6979 S-XL

Shown in Light Kingfisher.

Teflon coated peached microfibre wind proof gilet with lightweight lining. Side pockets and stitch detail on side panels. Glenmuir icon logo above right hem and Storm Bloc® logo on back collar.



Hot Pink Light Kingfisher Black Winter White

**GLENMUIR**



**Storm Bloc® Par** LWS6978 S-XL

Shown in Hot Pink/White.

Half sleeve Teflon coated peached microfibre wind shirt with lightweight lining. Jetted zip neck and side pockets. Adjustable draw cord hem. Contrast colour striping on body and sleeves. Glenmuir icon logo above right hem and Storm Bloc® logo on back collar.



Lagoon White Hot Pink White Navy Ink Stone Black



**Storm Bloc® Ace** LWS6980 S-XL

Shown in Lagoon/White.

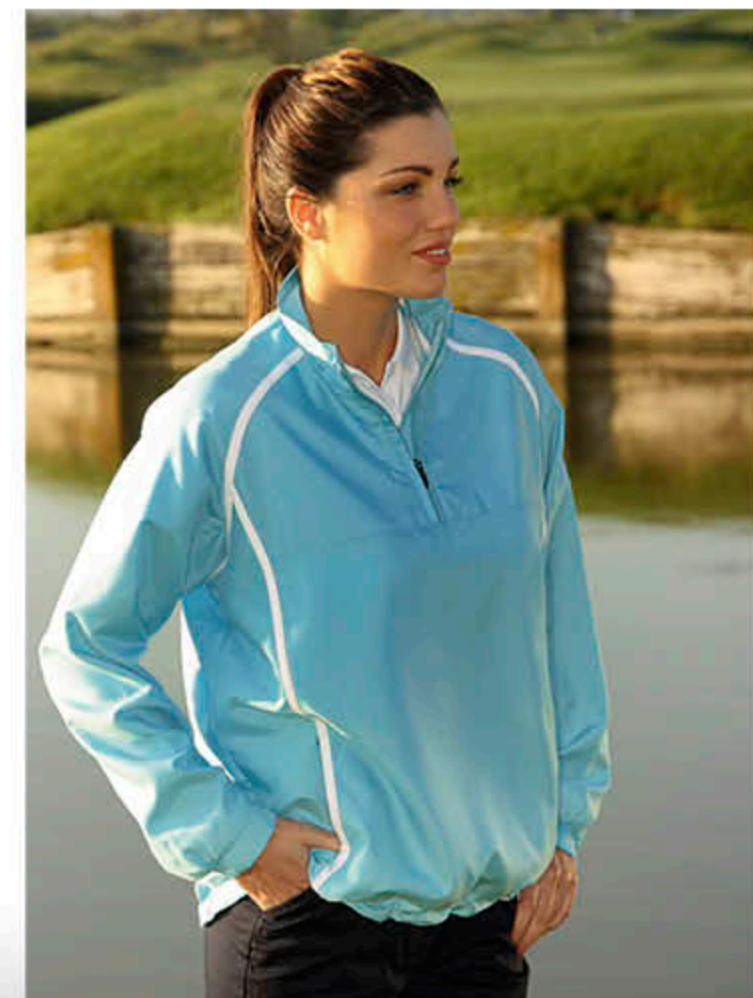
Long sleeve Teflon coated peached microfibre wind shirt with lightweight lining. Jetted zip neck and side pockets. Adjustable draw cord hem. Contrast colour striping on body and sleeves. Glenmuir icon logo above right hem and Storm Bloc® logo on back collar.



Lagoon White Black Graphite Navy Ink



Stone Black Black Garnet Hot Pink White





**GLENMUIR**



**Rain Bloc® Shell** LWJ2339 S-XL

Shown in Winter White.

Lightweight waterproof jacket with 3 year guarantee. Quiet lightweight and breathable laminated microfibre outer with ultra-light breathable micro-mesh lining. Concealed zip-off sleeves and stretch body panels. Water repellent full length zip and pockets zips. Adjustable velcro side tabs and draw cord hem. Rain Bloc® branding on back collar and front pocket.



**Rain Bloc® Medal** LWT6983 S-XL

SHORT (27") (69CM)  
REG (29") (74CM)  
LONG (31") (79CM)



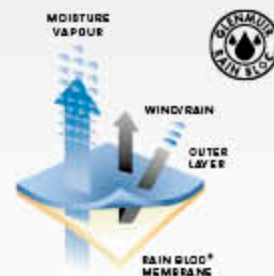
Shown in Black.

Lightweight waterproof trouser with 3 year guarantee. Quiet lightweight and breathable laminated microfibre outer with lightweight breathable lining. Flat fronted elasticated waistband with drawstring adjuster. Two front pockets and back scorecard pocket. Leg zips with storm flaps, velcro adjuster and fit studs. Glenmuir 1891 logo on back pocket and Rain Bloc® print at zip guard.



**RAIN BLOC®**

Our Rain Bloc® Shell waterproof system combines a supersoft lightweight waterproof laminated microfibre outer fabric and a breathable micro-mesh lining.



**Rain Bloc® Zip** LWJ6977 S-XL



Shown in Ice.

Lightweight waterproof zip neck top with 3 year guarantee. Quiet lightweight and breathable laminated microfibre outer with ultra-light breathable micro-mesh lining. Stretch body panels. Water repellent zip neck and side pockets. Adjustable velcro side tabs and draw cord hem. Rain Bloc® branding on back collar and front pocket.





STRETCH

**Stella** LT2390

UK 8-18 SHORT(27")  
REG(29") LONG(31")

EUR 36-46 SHORT(69cm)  
REG(74cm) LONG(79cm)

Shown in Black.

97% cotton 3% elastane stretch flat front trousers. Two front pockets and two back pockets. Deep waistband for comfort and fit. Glenmuir icon embroidery above right pocket opening.



Black Khaki



Mercury Navy



Winter White

**GLENMUIR**

STRETCH

**Miranda** LS2391

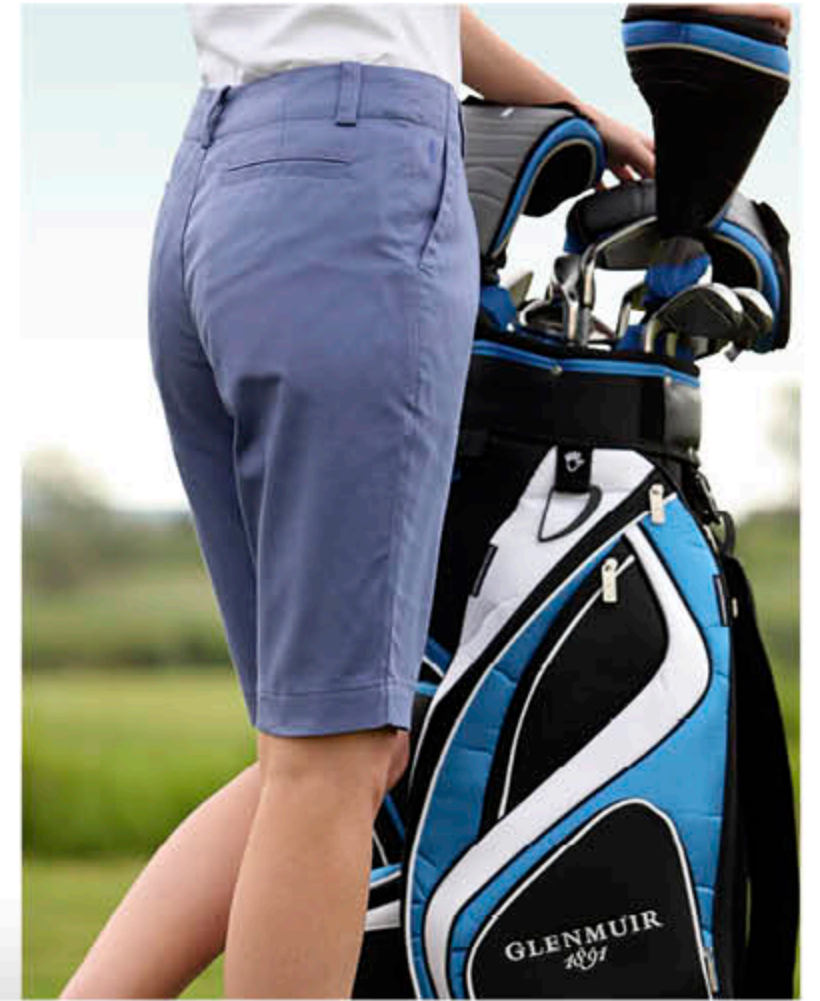
UK 8-18  
EUR 36-46

Shown in Iris.

97% cotton 3% elastane stretch flat front shorts. Two front pockets and two back pockets. Deep waistband for comfort and fit. Glenmuir icon embroidery above right pocket opening.



Iris Black Navy White



easy care

**Lintlaw** LT2163

UK 8-18 SHORT(27")  
REG(29") LONG(31")

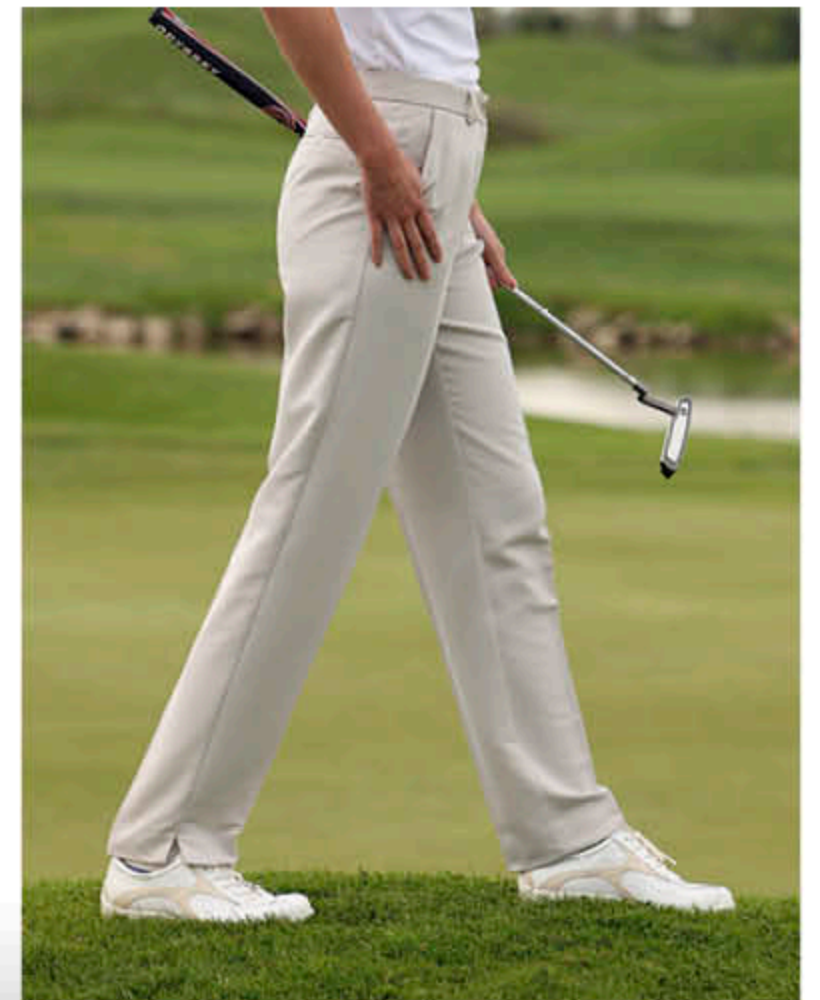
EUR 36-46 SHORT(69cm)  
REG(74cm) LONG(79cm)

Shown in Stone.

Easycare 100% polyester microfibre flat fronted ladies' trouser. Crease resistant. Side pockets and back welt pocket.



Black Navy Stone





SEASONAL PICK OF THE SEASON

**Tallulah LS2437**

UK 8-18  
EUR 36-46

Shown in Lagoon/White/Cobalt.

LIMITED EDITION 97% cotton 3% elastane stretch skort with Forget Me Not embroidery around hem and tee pocket at waistband. Lightweight jersey shorts attached underneath. Co-ordinates with seasonal shirts.



**GLENMUIR**

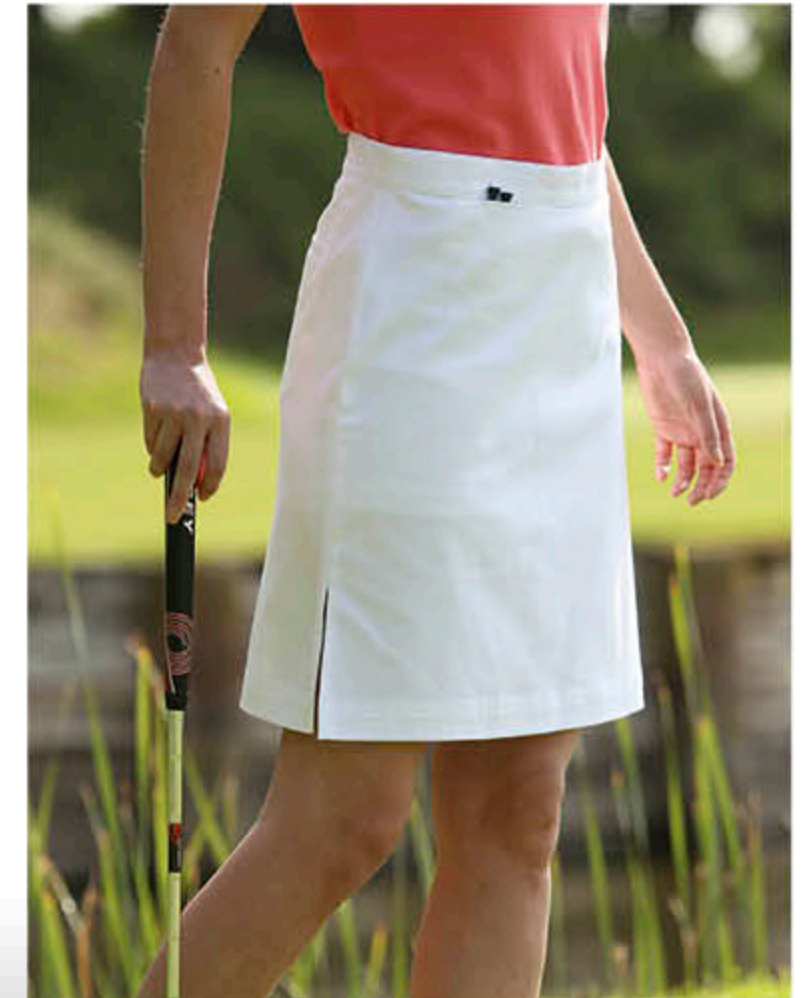
STRETCH

**Frances LS2321**

UK 8-18  
EUR 36-46

Shown in White.

97% cotton 3% elastane, stretch a-line skort. Lightweight jersey shorts attached underneath. Zip and button side fastening with tee pocket.



STRETCH

**Darvel LC2291**

UK 8-18  
EUR 36-46

Shown in Navy.

97% cotton 3% elastane, stretch flat fronted capri pants. Side pockets and back welt pocket.



## Golfing Juniors

Glenmuir introduces a capsule collection of junior clothing specially selected from our main range to appeal to tomorrow's golfing stars. We offer club cresting for co-ordinated teamwear from juniors upwards.

### Boy's Shirts

#### Rory GK7112

8/10 10/12 12/13 14/15

100% cotton honeycomb pique. Solid colour polo with Glenmuir 1891 embroidery on right sleeve.



Cobalt

White

Black

Light Blue

### Girl's Shirts

#### Zara GK2409

8/10 10/12 12/13 14/15

95% cotton 5% elastane pique. Stretch solid colour polo with rib collar. Glenmuir woven tab on right sleeve.



Lagoon

White

Black

Hot Pink

### Unisex Storm Bloc.® Windshirts

#### Kendal GK7114

8/10 10/12 12/13 14/15

Long sleeve Teflon coated peached microfibre windshirt with lightweight lining. Jettied zip neck and side pockets. Adjustable draw cord hem. Contrast colour striping on body and sleeves. Glenmuir 1891 logo on right sleeve and Storm Bloc.® Logo on back collar.



Black Graphite

Hot Pink White

### Unisex Caps

#### GK Cap JC6896

ONE SIZE

100% cotton twill junior cap with Glenmuir 1891 embroidery. Contrast sandwich peak and eyelets.



Black White

Light Blue White

Navy White

# MacWet®

FOR YOUR BEST GRIP YET IN THE DRY OR THE WET

### MacWet® Golf Gloves

GL1 6.5 LADIES' S TO 9.5 MEN'S XL

A uniquely responsive material that guarantees professional grip in all conditions. In the dry or the wet, MacWet® gloves' unique technology helps you keep a grip on your game.



#### All Grip No Slip

Ideal for use in the dry and the wet. Superior fit ensures greater feel and control.



#### Easy Wear Easy Care

Durable and easy to wash. Hand or machine wash up to 40°C max, to maintain glove performance.



#### Moisture Management

The unique all grip no slip palm fabric has inherent wicking properties which enhance comfort and performance.



### MacWet® Winter Golf Gloves

GL2 6.5 LADIES' S TO 9.5 MEN'S XL

Professional grip and cold weather protection in all conditions ensure that MacWet® winter gloves help you keep a grip on your game.



#### All Grip No Slip

Unique MacWet® synthetic palm fabric guarantees professional grip in all conditions.



#### Easy Wear Easy Care

Superior fit and an adjustable cuff strap ensure greater comfort and control. Durable and easy to wash. Hand or machine wash up to 40°C to maintain glove performance.



#### Cold Weather Protection

High-tech windproof and breathable insulating fabric keeps out the cold without compromising performance.



#### Moisture Management

The unique all grip no slip palm fabric has inherent wicking properties which enhance comfort and performance.



# GLENMUIR 1891

## Men's Headwear



**Yarrow GC7130 ONE SIZE**  
100% cotton twill cap with contrast detail on peak. Glenmuir 1891 embroidery on right side.



Navy Light Grey White

Lead Light Grey White

Black Sand Gold



**Berwick GC6429 ONE SIZE**  
100% cotton micro sand twill cap with Glenmuir 1891 embroidery.



Sand

Khaki

White

Black

Light Blue

Navy



**Carrbridge GC6853 ONE SIZE**  
Relaxed 100% cotton sand twill cap with sandwich peak and Glenmuir 1891 embroidery.



Sand

Black

Navy



**Bobble BH2 ONE SIZE**  
100% wool bobble hat. Glenmuir 1891 tonal lettering on front.



Winter White

Ruby

Navy

Tartan Green



**Duns FH1 ONE SIZE**  
Knitted hat with fleece lining and thinsulate layer. Outer layer: 100% acrylic, lining: 100% polyester. Contrast tipping detail on turn-up. Glenmuir woven tab centred on back.



Navy Ascot Blue

Black Sand

Sand Black

Charcoal Black

Tan Espresso

## Ladies' Headwear



**Alness LC2281 ONE SIZE**  
Ladies' structured brushed cotton cap with Glenmuir 1891 embroidery.



Alpine Pink

White

Black

Navy



**Chloe LV2367 ONE SIZE**  
Ladies' cotton visor with elasticated, adjustable cable back for a comfortable fit. Glenmuir icon print under peak.



Iris (Embroidered)

Lagoon (Embroidered)



**Natalie LC2440 ONE SIZE**  
Fixed headband visor. Peak can be embroidered with customer's logo. 100% cotton twill. Glenmuir icon print under peak.



Rose

Iris

Lagoon

Navy

Black

White



**Meredith LHB2377 ONE SIZE**  
100% polyester fleece ladies headband with Glenmuir icon embroidery on left side.



Lilac

Black

Navy

Winter White

Glamour

Men's Socks and Belts



Black White Navy Stone Grey Mix



**Dunbar S7020** UK 7-11 EUR 40-45

Men's twin-pack golf socks. 90% cotton, 8% polyamide, 2% Lycra® elastane. 10" crew with fully cushioned footbed. 1891 logo on side. Glenmuir 1891 footstamp.



Black White Navy Stone Grey Mix



**Logo Sock S7018** UK 7-11 EUR 40-45

Men's single-pack golf socks. Only available with customer's logo. 90% cotton, 8% polyamide, 2% Lycra® elastane. 10" crew with fully cushioned footbed. Glenmuir 1891 footstamp.



White Grey Marl White Navy



**Ridley S7111** UK 7-11 EUR 40-45

Men's twin-pack performance golf socks with Coolmax® moisture management system and Aegis® anti-bacterial technology for freshness. Cotton/Coolmax® polyester/Lycra® blend. Ankle sock with cushioning, comfort toe, heel grip, arch support and breathable mesh panel. Glenmuir branding knitted into rib.



Brown

White

Black

**Tranter B7111** S(32") M(35") L(38") XL(41")

Men's leather belt with Glenmuir logo on buckle.

Ladies' Socks



White Navy White Sand White Festival White Paradise White Lilac



**Ardelle S2167** UK 4-7 EUR 37-40

Ladies' twin-pack secret socks with contrast tipping and stripe detail. 89% cotton, 10% polyamide, 1% Lycra® elastane.



Black White Stone



**Jessica S2369** UK 4-8 EUR 37-41

Ladies' twin-pack golf socks. 89% cotton, 10% polyamide, 1% Lycra® elastane. 5" quarter crew with half-cushioned footbed. Glenmuir icon footstamp.



White Hot Pink White Peapod



**Manon S2408** UK 4-8 EUR 37-41

Ladies' twin-pack performance golf socks with Coolmax® moisture management system and Aegis® anti-bacterial technology for freshness. Cotton/Coolmax® polyester/Lycra® blend. 3" sock with cushioning, comfort toe, heel grip, arch support and breathable mesh panel. Glenmuir branding knitted into rib.



**Darla Fashion Pack**

S2443 UK 4-8 EUR 37-41

Mixed pack selection of ladies' golf fashion socks in seasonal colours. Cotton rich with Lycra elastane. Lightweight breathable secret sock. Glenmuir icon footstamp.



# GLENMUIR 1891

Golf means everything to us

Glenmuir Limited, Delves Road, Lanark, Scotland ML11 9DX  
 General Enquiries Tel: 01555 662244 Customer Service and Sales Tel: 01555 662241  
 Fax: 01555 663304 Email: customerservice@glenmuir.co.uk www.glenmuir.com



Many thanks to our friends at Emporda Golf for hosting this season's photo shoot and to those customers whose logos we have featured.

Designed and produced by LEWIS, Edinburgh. Photography by Bill Horne.

## UK Golf Sales

**SCOTLAND**  
 Sarah Eckford  
 Tel: 01555 662244  
 Mob: 07960 599848  
 Fax: 01555 663304  
 Email: sarah.eckford@glenmuir.co.uk

**NORTHERN IRELAND**  
 Tony Gibbons  
 Fax: (+353) 57 8644344  
 Mob: (+353) 86 8213605  
 Email: tonygibbons@o2.ie

**NORTH WEST ENGLAND and NORTH WALES**  
 Lancashire, Greater Manchester, Merseyside,  
 Cheshire, Clywd, Gwynedd, North Powys

Neil Humphreys  
 Tel: 01948 663393  
 Fax: 01948 663393  
 Mob: 07831 091414  
 Email: nhgald@btinternet.com

**NORTH EAST ENGLAND and CUMBRIA**  
 Northumberland, Tyne and Wear, Durham,  
 Cleveland, Yorkshire, North Humberside,  
 South Humberside, Cumbria

Ken Saint  
 Mob: 07769 710700  
 Email: kensaint14@aol.com

**THE MIDLANDS**  
 West Midlands, Warwickshire, Hereford  
 and Worcester, Northamptonshire,  
 Shropshire, Staffordshire, Derbyshire,  
 Nottinghamshire, Leicestershire

Jenny Stant  
 Tel: 0121 7051084  
 Fax: 0121 7051084  
 Mob: 07889 279545  
 Email: jenny.stant@glenmuir.co.uk

**EAST ANGLIA and NORTH LONDON**  
 Bedfordshire, Buckinghamshire,  
 Cambridgeshire, Norfolk, South  
 Lincolnshire, Hertfordshire, Essex,  
 Suffolk, North London, Oxfordshire

James Flower  
 Tel: 01476 591480  
 Fax: 01476 591480  
 Mob: 07960 676973  
 Email: jamesflower@live.com

**SOUTH EAST ENGLAND and SOUTH LONDON**  
 Hampshire, Surrey, Kent, West Sussex,  
 East Sussex, South London, Berkshire

Stuart Letts  
 Tel: 01483 505498  
 Fax: 01483 505562  
 Mob: 07831 484131  
 Email: stuart@lettsgolf.com

**SOUTH WEST ENGLAND and SOUTH WALES**  
 Dyfed, South Powys, Glamorgan, Gwent,  
 Avon, Gloucestershire, Wiltshire, Somerset,  
 Dorset, Devon, Cornwall, Channel Islands

David Huxtable  
 Tel: 01278 723120  
 Fax: 01278 723121  
 Mob: 07836 516112  
 Email: david.huxtable@huxegolf.com

## UK Corporate and Retail

Paul Gray  
 Tel: 01555 662244  
 Fax: 01555 663304  
 Mob: 07810 878 527  
 Email: paul.gray@glenmuir.co.uk

## International Sales

**ASIA PACIFIC**  
 Glenmuir Export Sales  
 Tel: (+44) 1555 662244  
 Fax: (+44) 1555 663304  
 Email: customerservice@glenmuir.co.uk  
 Web: www.glenmuir.com

**AUSTRALIA and NEW ZEALAND**  
 On The Bit Pty Ltd  
 Tel: (+61) 3 9589 5174  
 Fax: (+61) 3 9589 5178  
 Mob: (+61) 0411 043 931  
 Email: damian@golfbrands.com.au

**AUSTRIA**  
 Creador\* Sport Design  
 Tel: (+49) 7422 560 06 0  
 Fax: (+49) 7422 560 06 16  
 Email: info@creator.de

**BELGIUM and LUXEMBOURG**  
 N. V. Buva Sports  
 Tel: (+32) 9 386 87 44  
 Mob: (+32) 475 389 387  
 Email: guy.de.waale@skynet.be  
 Web: www.buvasport.com

**BULGARIA**  
 Golf Club Ltd - Ivan Antonov  
 Tel: (+359) 889396998  
 Email: antonov\_iv@yaho.com

**CANADA**  
 Brisson Sports and Marketing Inc.  
 Tel: (+1) 905 833 6333  
 Fax: (+1) 905 833 1988  
 Email: orders@brissonmarketing.com  
 Web: www.brissonmarketing.com

**CZECH REPUBLIC**  
 Golfshop Roman Chudoba  
 Tel: (+420) 271 960 437  
 Fax: (+420) 271 960 437  
 Email: golfhoctivar@kroma.cz

**DENMARK**  
 Golfkompagniet  
 Tel: (+45) 5649 2317  
 Email: jp@golfkompagniet.dk  
 Web: www.golfkompagniet.dk

**EASTERN EUROPE**  
 Glenmuir Export Sales  
 Tel: (+44) 1555 662244  
 Fax: (+44) 1555 663304  
 Email: customerservice@glenmuir.co.uk  
 Web: www.glenmuir.com

**EIRE**  
 Tony Gibbons  
 Fax: (+353) 57 8644344  
 Mob: (+353) 86 8213605  
 Email: tonygibbons@o2.ie  
 Freephone: 1800 928686

**FINLAND**  
 Duckstone Oy  
 Tel: (+358) 40 7339500  
 Email: info@duckstone.fi  
 Web: www.duckstone.fi

**FRANCE**  
 Multigolf  
 Tel: (+33) 01 53 56 12 00  
 Fax: (+33) 01 53 56 12 06  
 Mob: (+33) 06 07 99 03 72  
 Email: glenmuir.france@orange.fr

**GERMANY**  
 Creador\* Sport Design  
 Tel: (+49) 7422 560 06 0  
 Fax: (+49) 7422 560 06 16  
 Email: info@creator.de

**HONG KONG**  
 Tiara Trading Company Ltd  
 Tel: (+852) 9099 0046  
 Fax: (+852) 890 9732  
 Email: tiaratrading@hotmail.com

**ICELAND**  
 Örninn - Golfdepartment  
 Tel: (+354) 5772535  
 Fax: (+354) 5772536  
 Email: snorri@orninn.is  
 Web: www.orninn.is

**INDIA**  
 K&A Golf  
 Tel: (+91) 9818177223  
 Mob: (+91) 9818112330  
 Email: info@kandagolf.co.in  
 Web: www.kandagolf.co.in

**ITALY**  
 Glenmuir Export Sales  
 Tel: (+44) 1555 662244  
 Fax: (+44) 1555 663304  
 Email: customerservice@glenmuir.co.uk  
 Web: www.glenmuir.com

**JAPAN**  
 My Corporation  
 Tel: (+813) 3409 2747  
 Fax: (+813) 3409 2795  
 Email: info@my-corp.jp

**KAZAKHSTAN**  
 Golf Club Nurtau  
 Tel: (+7) 727 295 8823  
 Fax: (+7) 727 295 8830  
 Mob: (+7) 777 444 5353  
 Email: golfpro1@yandex.ru  
 Web: www.nurtau.kz

**NETHERLANDS**  
 Golfers World B.V.  
 Tel: (+31) 1 8663 6344  
 Fax: (+31) 1 8663 6340  
 Email: info@golfersworld.nl  
 Web: www.golfersworld.nl

**NORWAY**  
 Glenmuir Export Sales  
 Tel: (+44) 1555 662244  
 Fax: (+44) 1555 663304  
 Email: customerservice@glenmuir.co.uk  
 Web: www.glenmuir.com

**RUSSIA**  
 Eco Group Ltd.  
 Tel: (+7) 495 935 83 35  
 Fax: (+7) 495 935 83 37  
 Email: dmitry.rudnitsky@ecogroup.ru  
 Web: www.ecogroup.ru

**SOUTH AFRICA (including MAURITIUS)**  
 Hutchings Watson Trading  
 Tel: (+27) 82 9907255  
 Fax: (+27) 86 582 5899  
 Email: jackieh@hutchings.co.za

**SPAIN and PORTUGAL**  
 Holiday Golf S L  
 Tel: (+34) 95 278 9108  
 Fax: (+34) 95 278 8105  
 Email: info@holgolf.com  
 Web: www.holgolf.com

**SWEDEN CORPORATE MARKET**  
 D & J Golf Accessoarer  
 Tel: (+46) 150 915 65  
 Mob: (+46) 70 257 68 26  
 Email: delseus@tele2.se  
 Web: www.djhandel.se

**SWEDEN GOLF MARKET**  
 Back Up AB  
 Tel: (+46) 40 18 99 33  
 Fax: (+46) 40 699 14 12  
 Email: glenmuir@probackup.se  
 Web: www.probackup.se

**SWITZERLAND**  
 Nordim Sarl - Johan Magnus von Toll  
 Tel: (+41) 21 963 5075  
 Fax: (+41) 21 963 5076  
 Mob: (+41) 79 4495942  
 Email: glenmuir@glenmuir.ch  
 Web: www.glenmuir.ch

**TURKEY**  
 Goldenswing Spor Okullari  
 Tel: (+90) 541 733 10 01  
 Email: ostap@goldenswing.net

**UNITED ARAB EMIRATES**  
 Prosports International  
 Tel: (+971) 4 347 7737  
 Fax: (+971) 4 347 7797  
 Email: david@prosports.ae

**UNITED STATES OF AMERICA**  
 Glenmuir Export Sales  
 Tel: (+44) 1555 662244  
 Fax: (+44) 1555 663304  
 Email: customerservice@glenmuir.co.uk  
 Web: www.glenmuir.com



[www.glenmuir.com](http://www.glenmuir.com)



Spring Summer 2012